

SKY 401

Type : Oceangoing Tractor Tug

Year Built : April, 1997

**Builder : Astilleros Armon sa
Navia, Spain**



TUG SPECIFICATIONS :

Port of Registry : Keelung R.O.C.
Class : CR100±E Tug CMS(CAU)±
Official Number : 014950
MMSI Number : 416433000
IMO Number : 9120188
Call Sign : BP3240
Dimensions-- Length/Breadth :
28.10m/11.00m
-- Molded Depth : 4.50m
Tonnage -- Net/Gross : 119T/398T
-- Speed : 12Knots
-- Bollard Pull : 42T
Capacity Fuel Oil : 120tons
Fresh Water : 30 m³
Foam : NA
Dispersant : 5m³/tons
Main Engine : DEUTZ Diesel SBV8M628
8Cyl(s) 1500kw each,
2 sets (4000HP)
Propulsion : 2 Sets of Voith-Schneider
Propellers VSP 2862
Generator : VOLVO PENTA TMD 102A
158KW (211 BHP) at
1500rpm
(STAMFORD HCM 434C2-180KVA)

Deck Machinery

Forward Towing Winch

Type : NA
Breaking Capacity : NA
Rate : NA

Anchor Windlass

Type : FLUIDMECANICA
M-2600-2B-2C PCL-20.5
Rate : NA

Aftward Towing Winch

Type : SL 20/90
Breaking Capacity: 90T
Rate : 18tons at 12.5m/min

Towing Hook- SWL : 60T

Navigational & Communication Equipments

Magnetic/Gyro Compass, GPS, Marine Radar, Echo Sounder, Auto Pilot, GMDSS, A1+A2+A3 VHF

Fire Fighting System Pump

Type : CA 80/10
Capacity : 50m³/H H-30m

Monitor : Type : NA
Capacity : NA

Accommodation : 8 persons

Keppel



斯密特焜陽港勤服務股份有限公司

Smit Kueen Yang Harbour Services Co., Ltd.

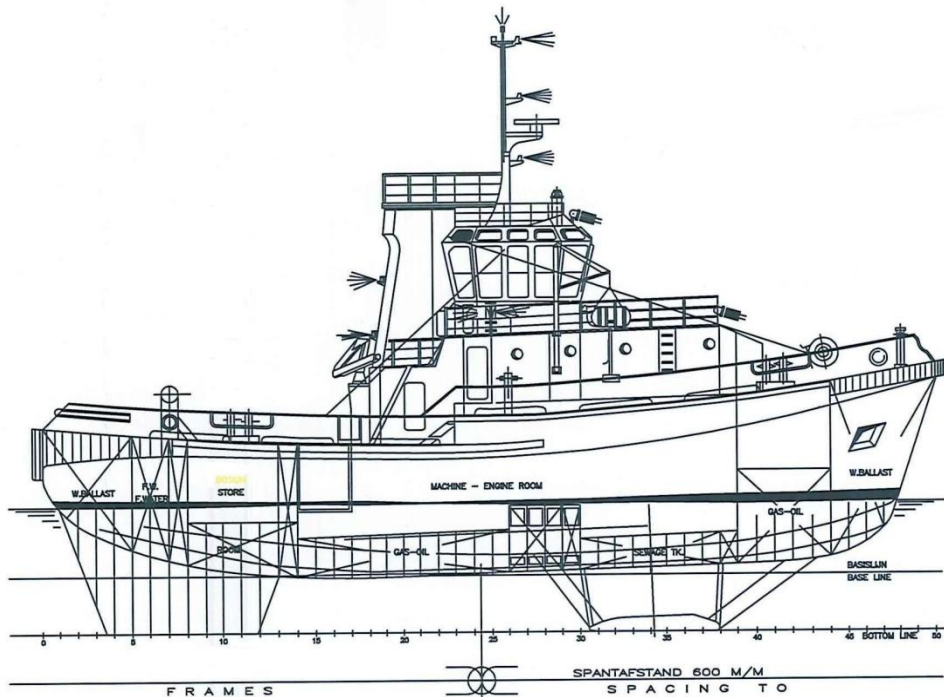
24941 新北市八里區商港路123號臺北港行政大樓裙樓3樓
3F., No. 123, Shang-Gang Rd., Bali District, New Taipei City 24941, Taiwan (R.O.C.)

TEL: 886-2-86302200 FAX: 886-2-86302211
info@smitkueenyang.com.tw

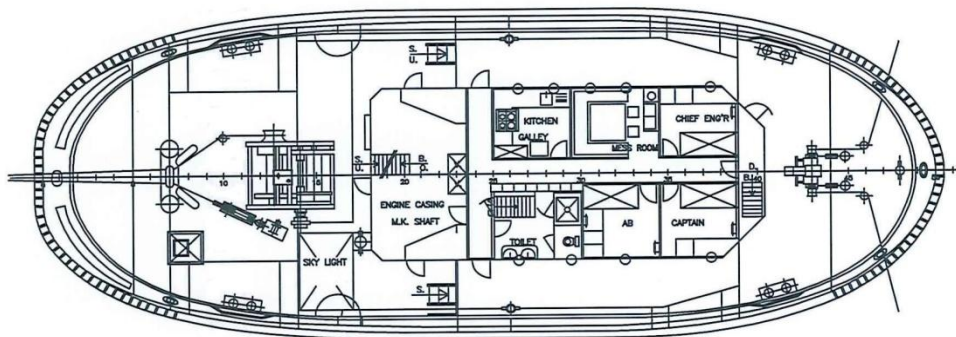
GENERAL ARRANGEMENT

TUG NAME : SKY 401

SIDE VIEW



MAIN DECK



BELOW MAIN DECK

