



# TUG LIMIN KST 53



## PUSHER HARBOUR TUG

### Principal Particulars

Flag	Indonesia
POR	Batam
YOB	2013
Call Sign	JZPI
IMO No	9620891
Place of Built	Guangzhou, China
Length OA	32.00 m
Breadth Moulded	11.00 m
Depth Moulded	5.60 m
Draft Design	4.30 m
Gross Tonnage	487 MT
Net Tonnage	147 MT
Bollard Pull	65 T
Max speed	12.5 knots
Classification	ABS + A1, towing vessel, + AMS, FiFi 1 with water spray, Unrestricted

### Machinery

Main Engine	2 x 2500 BHP Niigata 6L28HX at 750 rpm
Auxiliary Generator	2 x Caterpillar marine diesel generating sets, 125 kW/1500 rpm, diesel engine driving alternator, 380/3/50, 3 wire 1 x Caterpillar C4.4 port genset, 38 kW/50Hz/1500 rpm
Propulsion	2 x Niigata ZP-41A, fixed pitch propeller with steerable Azimuth thrusters

### Deck and Towing / AH Equipment

Anchor	2 x high holding power anchors, 675 kg each, chain cables, mooring lines
Anchor Windlass	Electro-hydraulic, single spit drum with double warping heads & gypsies
Brake holding	15.3 T (static)
Drum capacity	Split drum each for 110m of 80mm rope
Drum brake holding	138 T (static, 1 <sup>st</sup> layer)
Towing Hook	1 x 75 tons SWL disc type hook
Crane	1 x telescopic type, electro hydraulic SWL 1.0 tonnes, outreach 9 meter

### Navigation Equipments

GMDSS, VHF Radio, EPIRB, PA System, Echo Sounder, GPS Navigator, Radar, Navtex, Radar Transponder, Handheld VHF Radio, Wind Anemometer, AIS, Magnetic Compass, Navigation Lights & shapes, Clinometer, Search lights, Thrust Direction Indicator, Barometer/Thermometer

### Tank Capacities

Fuel Oil	120 m3
Fresh Water	30 m3

### Emergency Responses and Fire Fighting Capabilities

External Fire Fighting FIFI 1, 2700 m3/hr pump driven by FWD of one main engine  
Emergency FIFI pump 25 m3/hr at 25m head  
Fireman's Outfit  
Portable Fire Extinguishers  
Fixed CO2 system

### Life Saving Equipment

Liferafts 2 x 15 men inflatable liferafts  
Life buoys, life jackets, pyrotechnics, safety plan, EEBD  
Rescue boat 1 x 6 men

### Accommodation

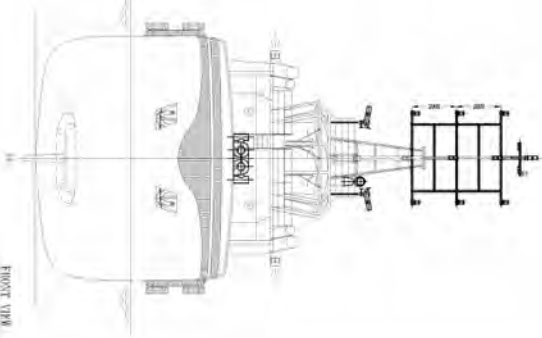
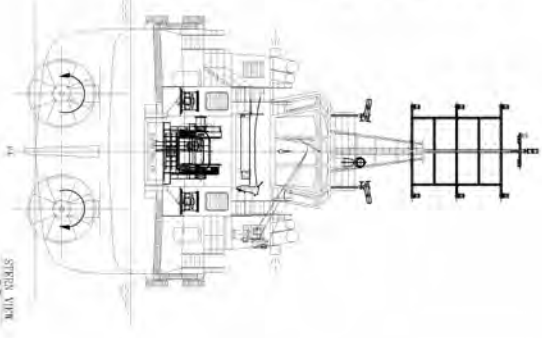
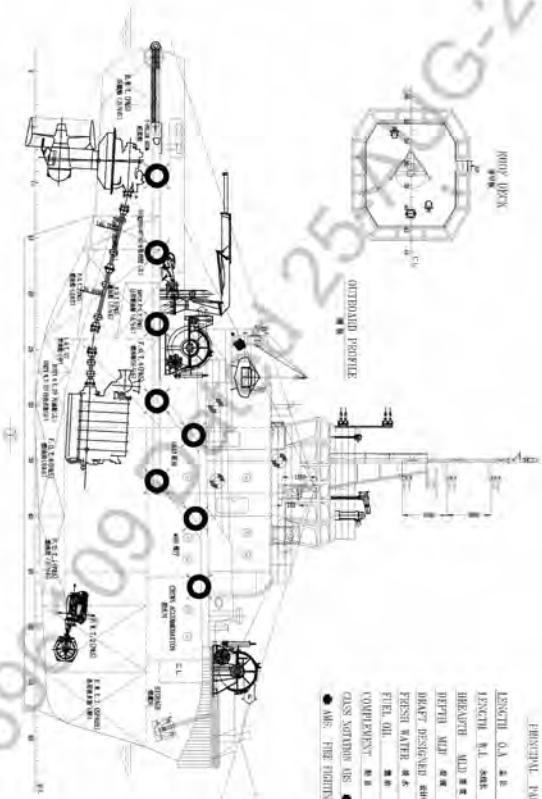
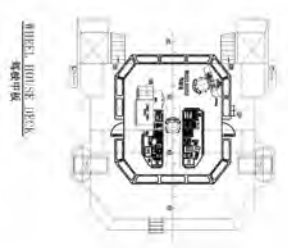
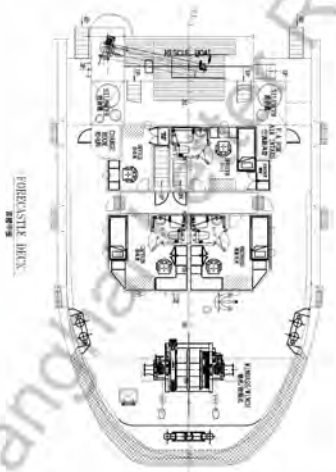
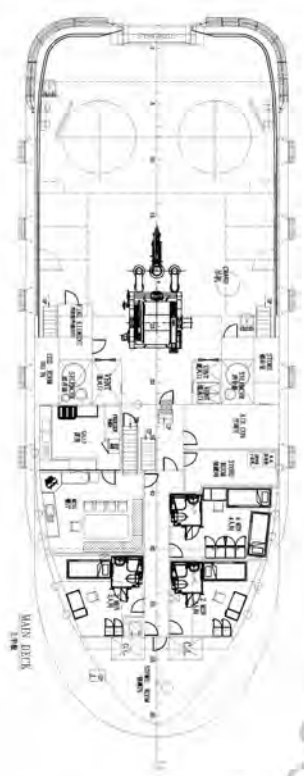
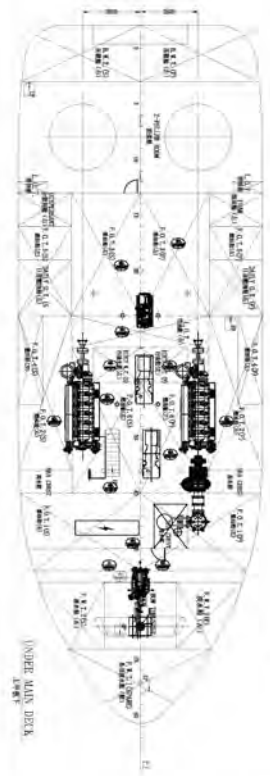
Total 12 pax



# TUG LIMIN KST 53

10-001-0639HDA  
V0165-2074

NO. 1	REVISION
NO. 2	REVISION
NO. 3	REVISION
NO. 4	REVISION
NO. 5	REVISION



GENERAL PARTICULARS

LENGTH O.A. S.S.	32.00 m
LENGTH M.L. S.S.	31.00 m
BREADTH M.L. S.S.	11.00 m
DEPTH M.D.	5.60 m
DECK DESIGNED AREA	1.50 m
FRESH WATER	~30 T
FUEL OIL	~150 T
CAPACITY	12 P.
CLASS NOTING	CC BY Z-TOWAGE ASSOC.
ABS	TIER II/III CLASS 1

**REVIEWED**  
Details of this review are as indicated in the ABS Letter

**BONNY FAIR DEVELOPMENT LTD.**

船名	53	船主	PT. LIMIN KST
船種	拖船	船廠	PT. LIMIN KST
船號	53	船主地址	Jl. HR. Rasuna Said Kav C 20-21 Jakarta 12940
船主	PT. LIMIN KST	船主地址	Jl. HR. Rasuna Said Kav C 20-21 Jakarta 12940
船主	PT. LIMIN KST	船主地址	Jl. HR. Rasuna Said Kav C 20-21 Jakarta 12940
船主	PT. LIMIN KST	船主地址	Jl. HR. Rasuna Said Kav C 20-21 Jakarta 12940
船主	PT. LIMIN KST	船主地址	Jl. HR. Rasuna Said Kav C 20-21 Jakarta 12940
船主	PT. LIMIN KST	船主地址	Jl. HR. Rasuna Said Kav C 20-21 Jakarta 12940
船主	PT. LIMIN KST	船主地址	Jl. HR. Rasuna Said Kav C 20-21 Jakarta 12940
船主	PT. LIMIN KST	船主地址	Jl. HR. Rasuna Said Kav C 20-21 Jakarta 12940

**PT. LIMIN KST**  
H Tower Building 15th Floor Unit E  
Jl. HR. Rasuna Said Kav C 20-21  
Jakarta 12940

Tel : +62 21-295 333 63

Fax : +62 21-295 333 61  
Email : contact\_jkt@liminmarine.com