



TUG LIMIN KST 51



PUSHER HARBOUR TUG

Principal Particulars

Flag	Indonesia
POR	Batam
YOB	2008
IMO No	9501423
Call Sign	PNYP
Builder	Keppel Nantong Shipyard Co. Ltd
Length OA	32.00 m
Breadth Moulded	11.50 m
Depth Moulded	5.20 m
Draft Design	Not more than 5.50 m
Gross Tonnage	469 MT
Net Tonnage	140 MT
Bollard Pull	70 T
Max speed	12 knots
Classification	Dual Class (BV, BKI) I + Hull + Mach, Tug, Unrestricted Navigation

Machinery

Main Engine	2 x 2500 BHP Niigata 6L28HX at 750 rpm
Auxiliary Generator	Diesel driven generator, 3 x 120 kW 3 phase 4 wire system, 415 Volts A.C
Propulsion	2 x Niigata ZP-41, fixed pitch propeller with steerable Azimuth thrusters

Deck and Towing / AH Equipment

Anchor Windlass	Electro-hydraulic driven Brake holding capacity : 150 T
Aft Towing Winch	Electro-hydraulic driven Brake holding capacity : 180 T

Navigation Equipments

SSB Radio, Radar, Satellite Compass, Auto Pilot, Echo Sounder, VHF, GPS, Magnetic Compass, Draft Design, Navtex Receiver, AIS, GMDSS (area A3), SSAS, Inmarsat mini-m, SART & EPIRB, Weather Fax

Tank Capacities

Fuel Oil	160 m3
Fresh Water	50 m3
Foam	7 m3
Dispersant	3 m3

Emergency Responses and Fire Fighting Capabilities

FIFI pump	1,400 m3/hr at 140 m head
FIFI monitor	2 x 600 m3/hr Throw length : 100 m Throw height : 45 m

One set of foam proportional system
Self drenching system in main deck, deck house, and wheel house
Fixed CO2 system

Other

CCTV for aft towing winch & engine room

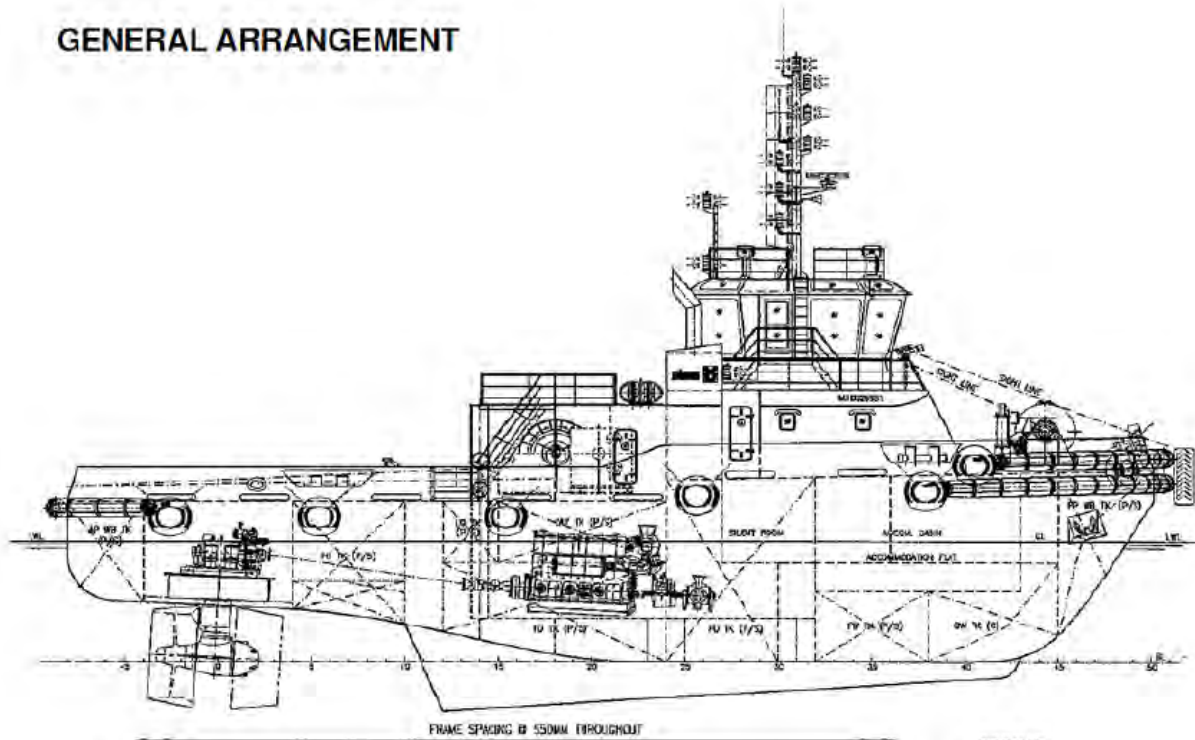
Accommodation

Total	12 pax
-------	--------

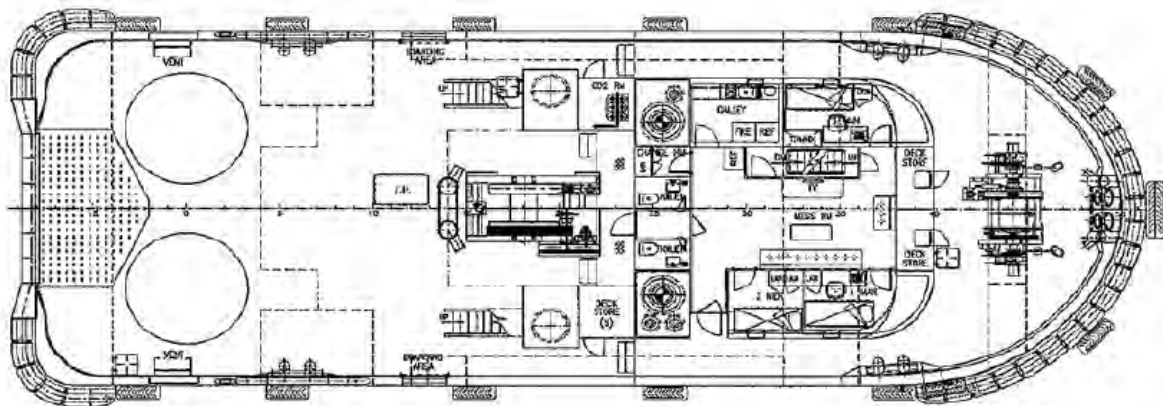


TUG LIMIN KST 51

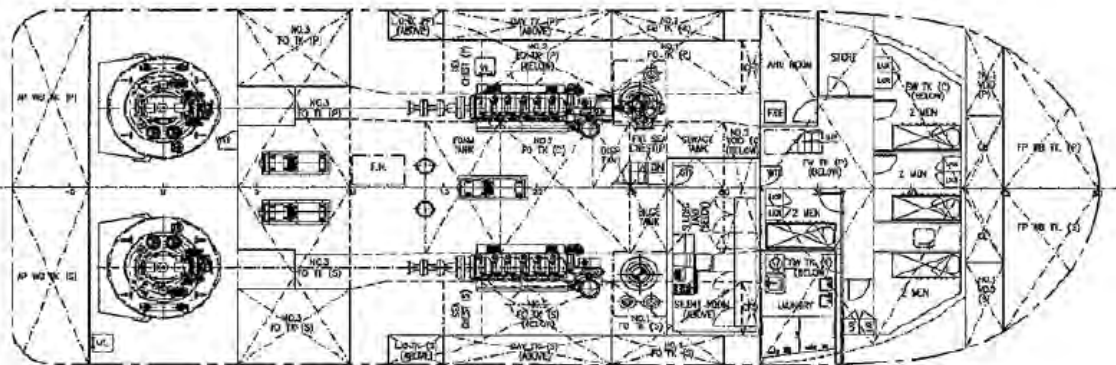
GENERAL ARRANGEMENT



PROFILE



MAIN DECK



BELOW MAIN DECK

Note: The information and/or sketches shown are given in good faith without any warranties or conditions, expressed or implied, statutory or otherwise and subject to revision without prior notice. Interested parties must satisfy themselves by inspection or other means of the details of the vessels to check on suitability. Optional items are to be mutually agreed for inclusion/ exclusion in vessel specifications.