

# FENGGANG 2



<b>Name</b>	<b>FENGGANG 2</b>	
<b>Port of Registry</b>	<b>Lianyungang, PRC</b>	
<b>Year Built</b>	<b>2009</b>	
<b>Type</b>	<b>Pusher Harbour Tug.</b>	<b>Deck Machinery</b> Anchor windlass/ Towing Winch : Marine Equipment Electro hydraulic driven. Braking capacity 90 T
<b>Class</b>	<b>CCS</b>	Aft Towing Winch (with spooling device): Marine Equipment Electro hydraulic driven. Pull 45 T at 7m/min; 13 T at 21m/min Braking capacity 120 T
<b>Dimensions:</b>		<b>Marine Crane</b> 1 x PALFINGER knuckle boom type Electro-hydraulic. SWL 1.0 tons @ 6m
Length Overall	28.0 m	<b>Navigational &amp; Communication Equipment</b> Echo Sounder, EPIRB, Marine Radar, GMDSS Area 3, GMDSS VHF Radio, GPS Navigator, WASS / GPS Plotter, Magnetic Compass, AIS System, Satellite compass / Auto Pilot, Navtex Receiver, SSB, VHF Radio.
Breadth Moulded	9.8 m	
Draft Design	4.0 m	
Depth Moulded	4.9 m	
<b>Tonnage</b>		<b>Fire Fighting System</b> - Engine driven FIFI Pump - model no: SFP250 @ 350HP - Pump Cap @ 1,445 m <sup>3</sup> /h - Gearbox with clutch - 2 x fire monitor (600 m <sup>3</sup> /h each) Throw Length: 100m Throw Height: 45m - One set Foam Mixing fitting - Self drenching system: Main Deck Deck House Wheel House
Net Tonnage	99	
Gross Tonnage	333	
<b>Speed</b>	<b>12 knots</b>	<b>Other</b> Oil Pollution Fighting system
<b>Bollard Pull:</b>	<b>45 Ton in excess</b>	<b>Accommodation</b> 10 persons
<b>Capacity</b>		
Fuel oil	174.0 m <sup>3</sup>	
Fresh water	25.8 m <sup>3</sup>	
Foam	10.6 m <sup>3</sup>	
Dispersant	10.6 m <sup>3</sup>	
<b>Main Engines</b>		
Niigata 6L25HX		
2 x 1800 bhp at 750 rpm		
<b>Propulsion</b>		
2 x Nigata ZP-21 fixed pitch propeller with steerable Azimuth thrusters		
<b>Generators</b>		
2 x Volvo Penta D7AT		
99kw, 415V, 3ph, 50Hz		

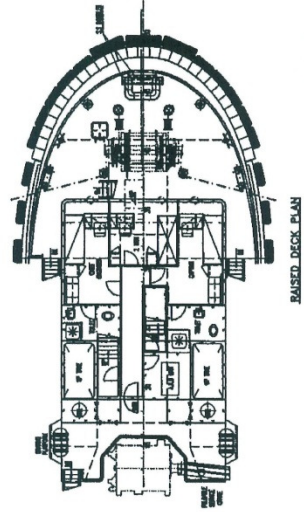
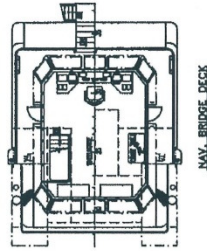
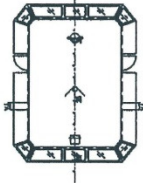
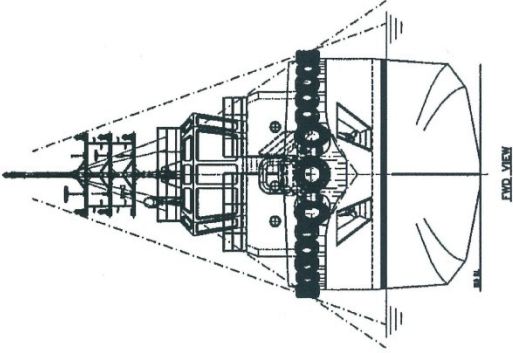
*This vessel specification is given in good faith and assumed to be correct as at 10 March 2014*

## 大丰斯密特拖轮服务有限公司 Dafeng Smit Towage Services Co., Ltd

江苏省大丰市大丰港中央大道1号 邮政编码: 224100  
No.1 Central Avenue, Dafeng Port, Dafeng City, Jiangsu Province, P.R.C.

PRINCIPAL DIMENSIONS

LENGTH O.A. (EXTREME)	26.00 M
LENGTH B.P.	22.94 M
BREADTH MLD.	5.80 M
DEPTH MLD.	4.00 M
DRAUGHT MLD.	4.00 M
COMPLEMENT	10 MEN
SPEED	APPROX. 12 KNOTS



CLASS - AHS-41 (L) - AHS TOWING VESSEL

