

Name **KST Space**

Port of Registry **Singapore**

Year Built **2005**



Type : Tractor Harbour Tug

Class

Lloyd's Register of Shipping
 ✱ 100 A1 Tug ✱ LMC (Fire Fighting Capability)

Dimensions

Length Overall : 27.8m
 Breadth Moulded : 9.80m
 Draft, Hull : 3.00m
 Draft, to extreme
 baseline : 5.35m
 Depth Moulded : 4.35m

Tonnage

Net Tonnage : 87 T
 Gross Tonnage : 290 T

Speed : 12 Knots

Bollard Pull : 48 T excess

Capacity

Fuel : 100m³
 Fresh water : 30m³
 Foam : 13m³
 Dispersant : 4m³

Main engines

Niigata 6L22HX
 2 x1800bhp at 1,000 rpm

Propulsion

2 x Niigata ZP-21 fixed pitch propeller with
 steerable Azimuth thrusters

Generator

3 x Cummins 6BT5.9_DM
 83ekw, 380V, 3pH, 50Hz

Deck Machinery

Anchor windlass :
 Plimsoll, electro hydraulic driven.

Aft Towing Winch :

Plimsoll electro hydraulic driven.
 Braking capacity 120 T

Navigational & Communication Equipment

Echo Sounder, EPIRB, GMDSS Radar Transponder,
 GMDSS VHF Radio, GPS Navigator, Marine
 Radar, Navtex Receiver, SSB, VHF Radio

Fire fighting system

- Main Engine driven Nijhuis model HGT1- 250.500 pump
 Capacity 1400 m³/hr at 140m head
- Speed-up gearbox with clutch Kumera : 2FGEC-2280
- 2 x SKUM fire monitor
 Throw length: 100m
 Throw height: 45m
- 1 set Foam Mixing fitting
- Self drenching system: Main Deck
 Deck House
 Wheel House

Other

Oil Pollution Fighting System

Accommodation : 10 persons

Builder : Keppel Singmarine Pte Ltd

This vessel specification is given in good faith and assumed to be correct. January 2006



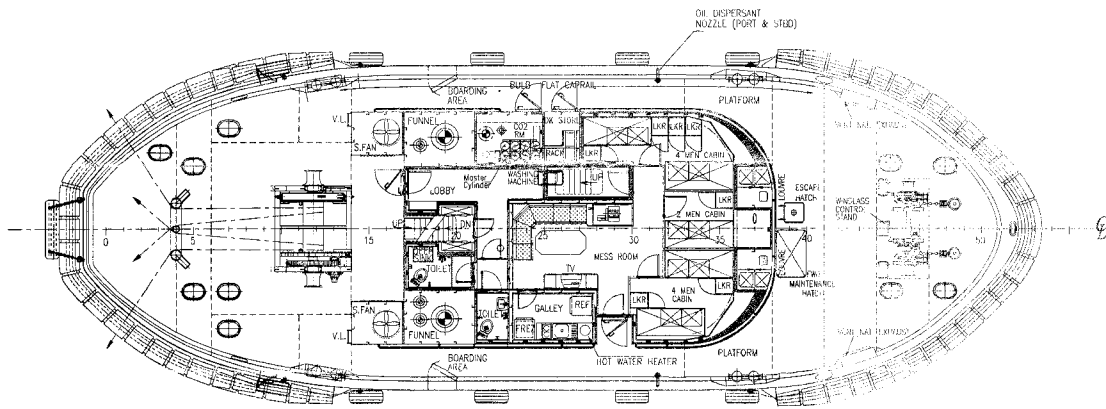
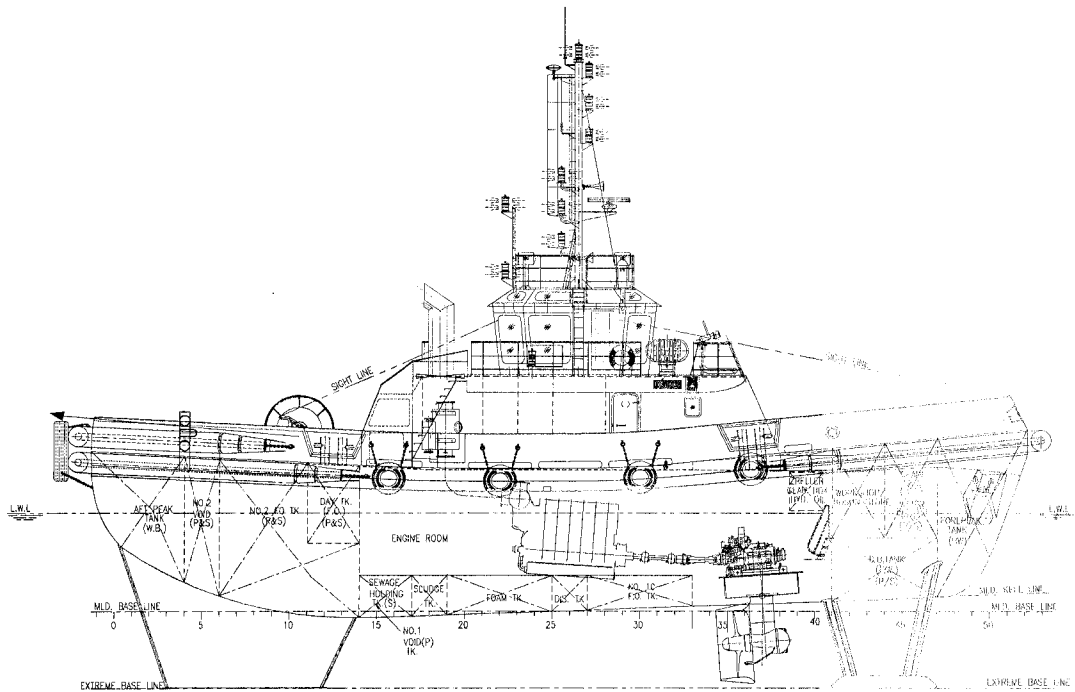
KEPPEL SMIT TOWAGE PRIVATE LIMITED



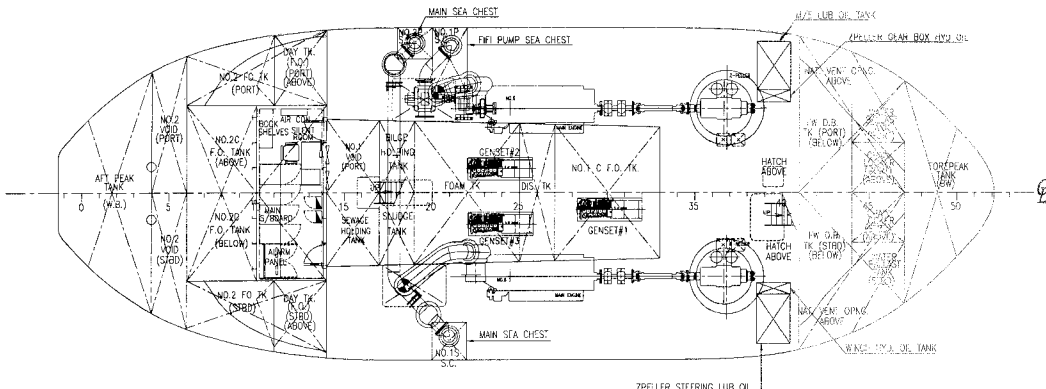
23 Gul Road, Singapore 629356
 Telephone: +65 666 84 222 Fax: +65 666 84 333
 Email: kst@keppelsmit.com.sg Website: www.keppelsmit.com.sg



GENERAL ARRANGEMENT
TUG NAME: KST SPACE



MAIN DECK



BELOW MAIN DECK