

**Name**                    **KST Sky**  
**Port of Registry** **Singapore**  
**Year Built**            **2005**



**Type**                    : Tractor Harbour Tug  
**Class**  
 Lloyd's Register of Shipping  
 ✱ 100 A1 Tug ✱ LMC (Fire Fighting Capability)

**Dimensions**  
 Length Overall    : 27.8m  
 Breadth Moulded : 9.80m  
 Draft, Hull        : 3.00m  
 Draft, to extreme  
 baseline           : 5.35m  
 Depth Moulded   : 4.35m

**Tonnage**  
 Net Tonnage       : 87 T  
 Gross Tonnage    : 290 T

**Speed**                : 12 Knots

**Bollard Pull**        : 48 T excess

**Capacity**  
 Fuel                 : 100m<sup>3</sup>  
 Fresh water        : 30m<sup>3</sup>  
 Foam                : 13m<sup>3</sup>  
 Dispersant         : 4m<sup>3</sup>

**Main engines**  
 Niigata 6L22HX  
 2 x1800bhp at 1,000 rpm

**Propulsion**  
 2 x Niigata ZP-21 fixed pitch propeller with  
 steerable Azimuth thrusters

**Generator**  
 3 x Cummins 6BT5.9\_DM  
 83ekw, 380V, 3pH, 50Hz

**Deck Machinery**  
 Anchor windlass :  
 Plimsoll, electro hydraulic driven.

Aft Towing Winch :  
 Plimsoll electro hydraulic driven.  
 Braking capacity 120 T

**Navigational & Communication Equipment**  
 Echo Sounder, EPIRB, GMDSS Radar Transponder,  
 GMDSS VHF Radio, GPS Navigator, Marine  
 Radar, Navtex Receiver, SSB, VHF Radio

**Fire fighting system**  
 - Main Engine driven Nijhuis model HGT1- 250.500 pump  
 Capacity 1400 m<sup>3</sup>/hr at 140m head  
 - Speed-up gearbox with clutch Kumera : 2FGEC-2280  
 - 2 x SKUM fire monitor  
   Throw length: 100m  
   Throw height: 45m  
 - 1 set Foam Mixing fitting  
 - Self drenching system: Main Deck  
                                   Deck House  
                                   Wheel House

**Other**  
 Oil Pollution Fighting System

**Accommodation** : 10 persons

**Builder**                : Keppel Singmarine Pte Ltd

*This vessel specification is given in good faith and assumed to be correct. January 2006*

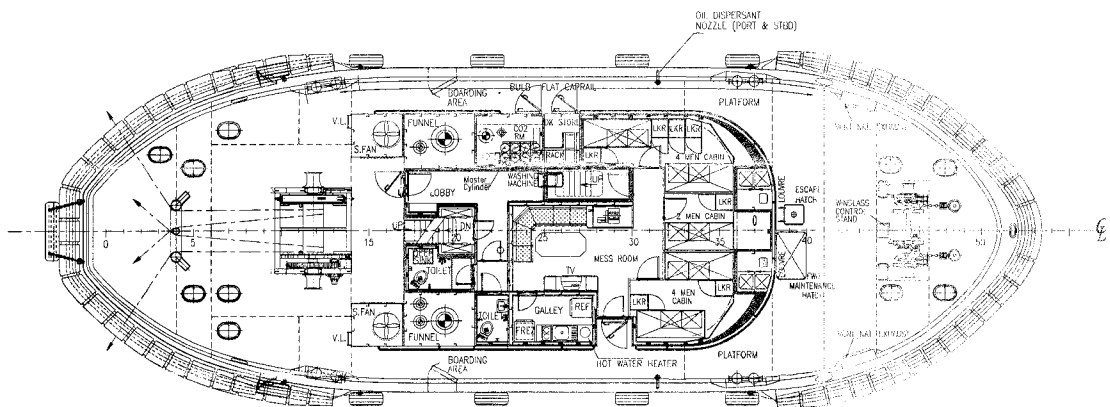
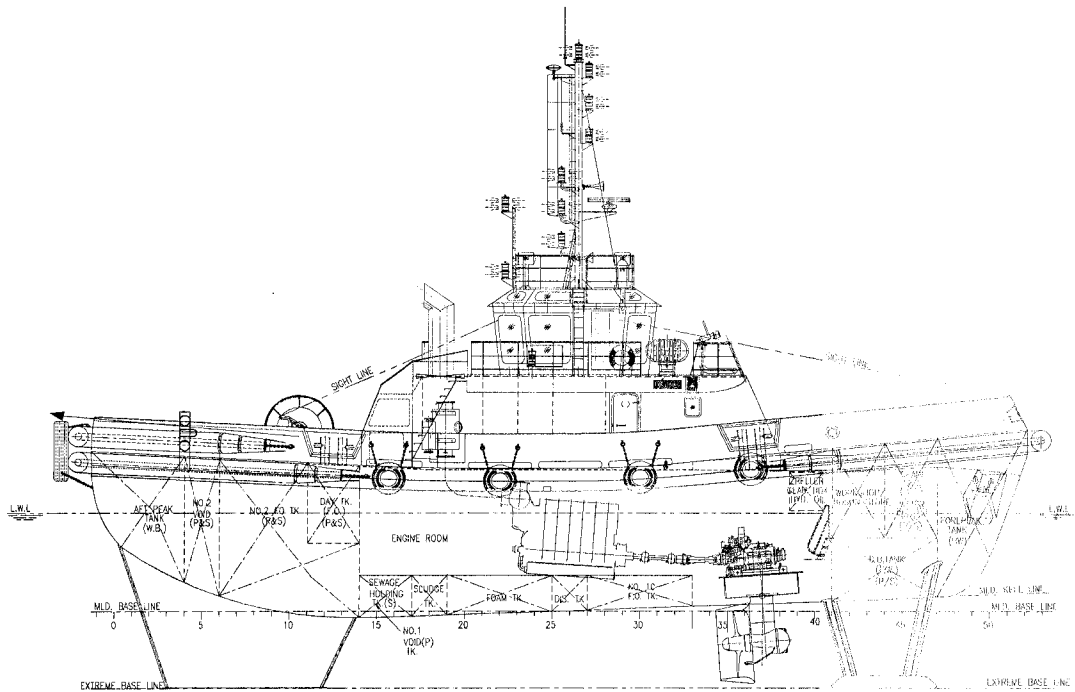


**KEPPEL SMIT TOWAGE PRIVATE LIMITED**

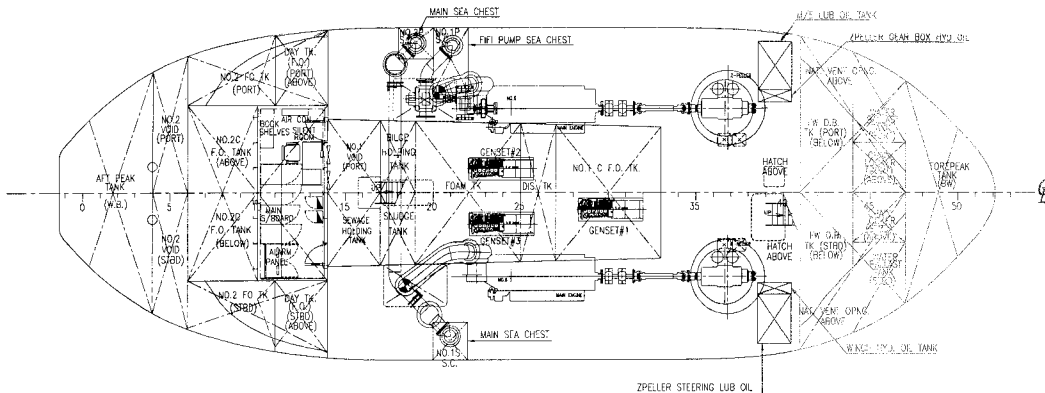


23 Gul Road, Singapore 629356  
 Telephone: +65 666 84 222                    Fax: +65 666 84 333  
 Email: kst@keppelsmit.com.sg                Website: www.keppelsmit.com.sg

GENERAL ARRANGEMENT  
TUG NAME: KST SKY



MAIN DECK



BELOW MAIN DECK