

KST SEDNA & KST SIRIUS

Name KST Sedna & KST Sirius
Port of Registry Singapore
Year Built 2006



Type Tractor Tug

Class

Lloyd's Register of Shipping
* 100 A1 Tug * LMC (Fire Fighting Capability
& Oil Pollution Control Capability)

Dimensions:

Length Overall 27.80 m
Breadth Moulded 9.80 m
Design Draft 5.35m
Depth Moulded 4.35 m

Tonnage

Net Tonnage 87 T
Gross Tonnage 290 T

Speed 12 knots

Bollard Pull: 49 T

Capacity

Fuel oil 100 m³
Fresh water 30 m³
Foam 12 m³
Dispersant 4 m³

Main Engines

Niigata 6L25HX
2 x 1,800 bhp at 750 rpm

Propulsion

2 x Niigata ZP-21 fixed pitch propeller with
steerable Azimuth thrusters with slipping
omega clutch

Generator

3 x Cummins, CSMX T5.9-2
83kw, 380V, 3pH, 50Hz

Deck Machinery

Anchor windlass :
Plimsoll electro hydraulic driven.
Rate: 2.1 ton at 10m/min

Aft Towing Winch :
Plimsoll electro hydraulic driven.
Braking capacity 120 T

Navigational & Communication Equipment

Echo Sounder, EPIRB, GMDSS VHF Radio,
GPS Navigator, Magnetic Compass, Marine
Radar, Navtex Receiver, SSB, VHF Radio.

Fire Fighting System

- Engine driven Nijhuis model HGT1-250.500 pump. Capacity 1,400 m³/hr
- Gearbox with clutch Kumera : 2FGEC-2340
- 2 x SKUM fire monitor (600 m³/hr each)
Throw Length: 100m
Throw Height: 45m
- One set Foam Mixing fitting
- Self drenching system: Main Deck
Deck House
Wheel House

Other

Anti Oil Pollution Dispersant system

Accommodation

10 persons

Builder

Keppel Singmarine Pte Ltd, Singapore

This vessel specification is given in good faith and assumed to be correct. June 2006



KEPPEL SMIT TOWAGE PRIVATE LIMITED



23 Gul Road, Singapore 629356

Telephone: +65 666 84 222

Fax: +65 666 84 333

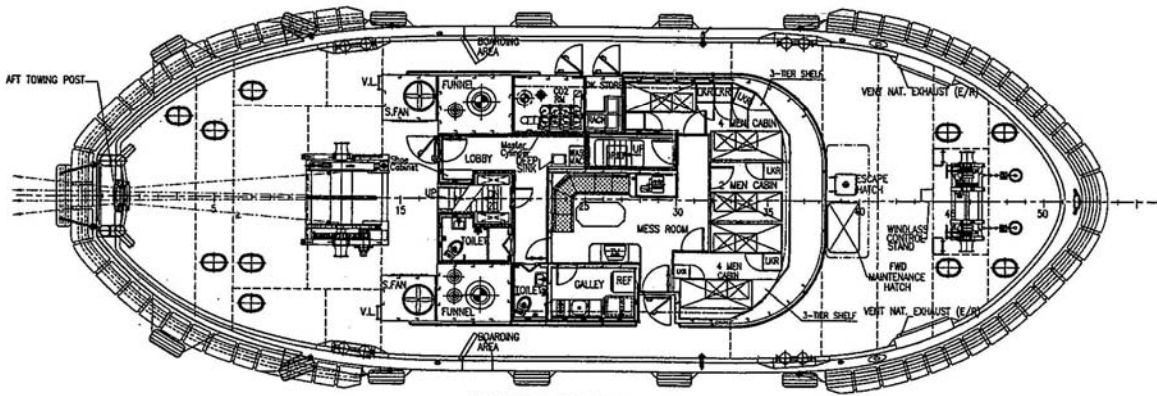
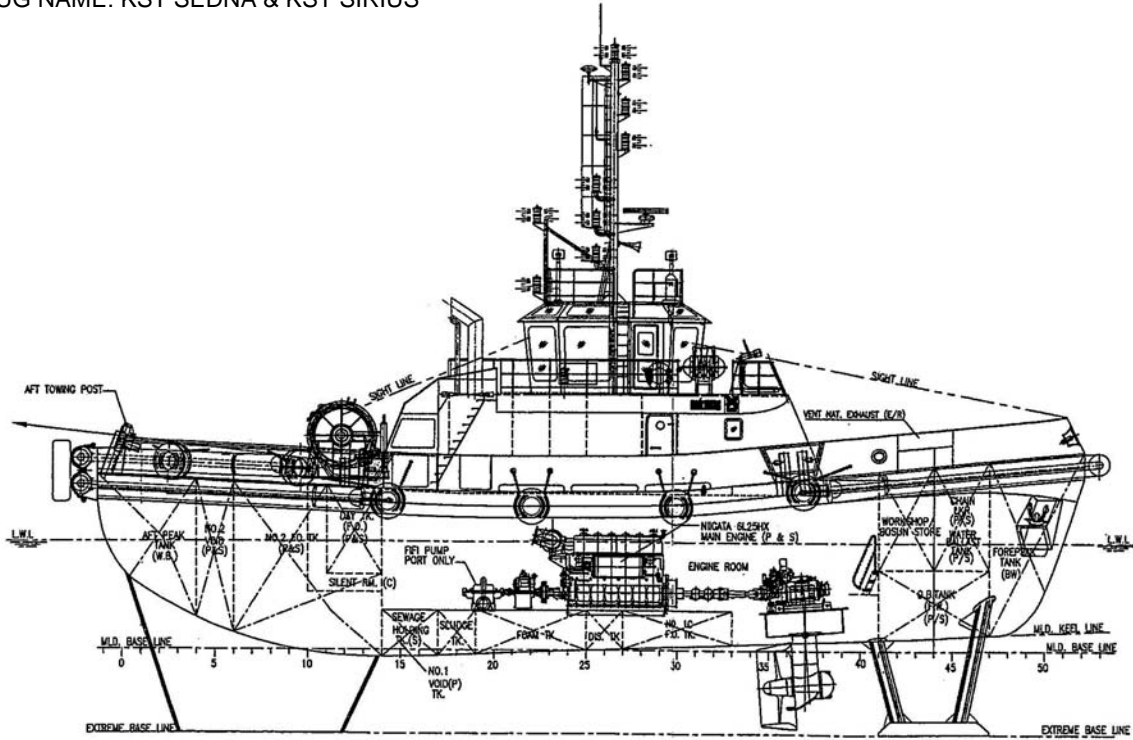
Email: kst@keppelsmit.com.sg

Website: www.keppelsmit.com.sg

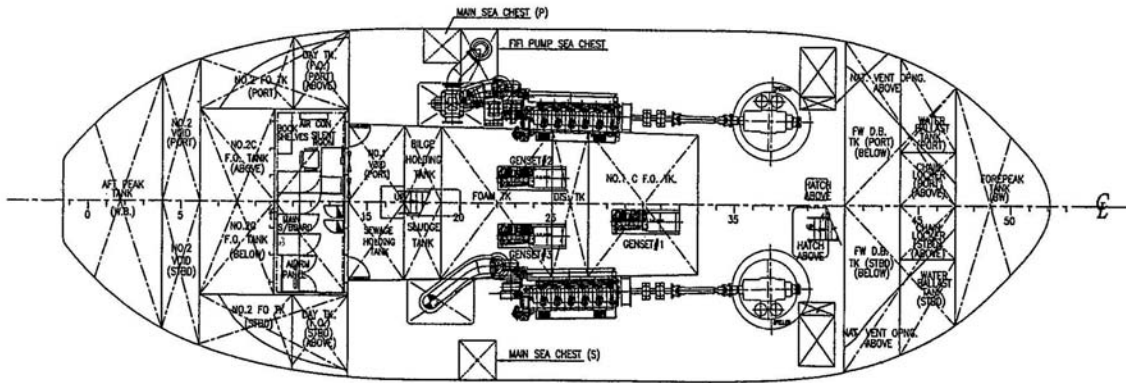


GENERAL ARRANGEMENT

TUG NAME: KST SEDNA & KST SIRIUS



MAIN DECK



BELOW MAIN DECK