

KST SUNRISE & KST SPHERE

Name KST SUNRISE &
KST SPHERE
Port of Registry Singapore
Year Built 2007



Type Pusher Harbour Tug.

Class

Lloyd's Register of Shipping
✳ 100 A1 Tug ✳ LMC (Fire Fighting Capability)

Dimensions:

Length Overall 27.90 m
Breadth Moulded 9.00 m
Draft Design 3.80 m
Depth Moulded 4.70m

Tonnage

Net Tonnage 73 T
Gross Tonnage 246 T

Speed 12 knots

Bollard Pull: 45 T excess

Capacity

Fuel oil 110 m³
Fresh water 30 m³
Foam 5.5 m³
Dispersant 5.5 m³

Main Engines

Niigata 6L25HX
2 x 1,800 bhp at 750 rpm

Propulsion

2 x Niigata ZP-21 fixed pitch propeller with steerable Azimuth thrusters

Generator

2 x Cummins 6CT8.3D(M)
95kw, 380V, 3pH, 50Hz

Deck Machinery

Anchor winch/ windlass :
Plimsoll electro hydraulic driven.
Braking capacity 110 T

Aft Towing hook :
SWL 45T.

Navigational & Communication Equipment

Echo Sounder, EPIRB, GMDSS Radar
Transponder, GMDSS VHF Radio, GPS
Navigator, Magnetic Compass, Marine Radar,
Navtex Receiver, SSB, VHF Radio.

Fire Fighting System

- Engine driven Nijhuis model HGT1-250.500 pump. Capacity 1,400 m³/hr
- Gearbox with clutch Kumera : 2FGEC-2280
- 2 x SKUM fire monitor (600 m³/hr each)
Throw Length: 100m
Throw Height: 45m
- One set Foam Mixing fitting
- Self drenching system: Main Deck
Deck House
Wheel House

Other

Oil Pollution Fighting system

Accommodation

10 persons

Builder

Keppel Nantong Shipyard Co. Ltd

This vessel specification is given in good faith and assumed to be correct. December 2007



KEPPEL SMIT TOWAGE PRIVATE LIMITED



23 Gul Road, Singapore 629356

Telephone: +65 666 84 222

Fax: +65 666 84 333

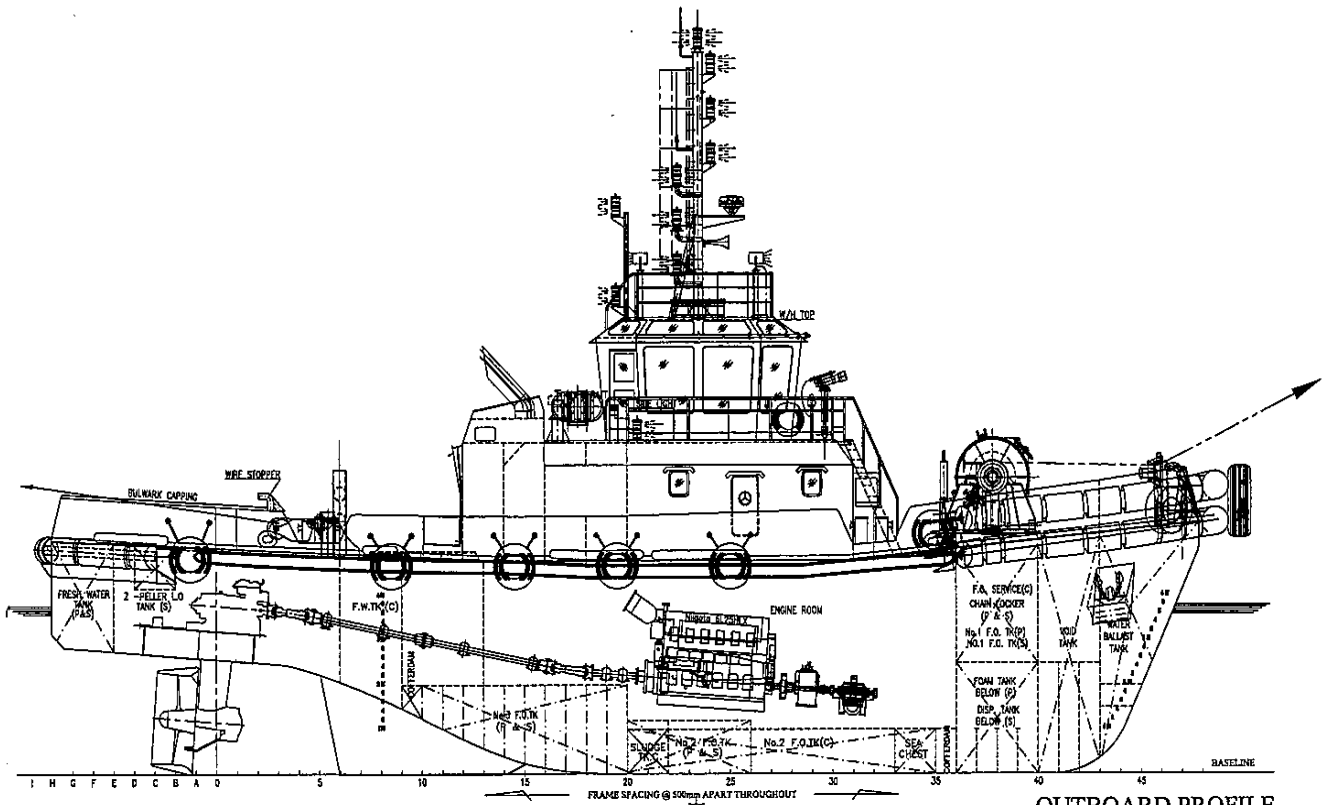
Email: kst@keppelsmit.com.sg

Website: www.keppelsmit.com.sg

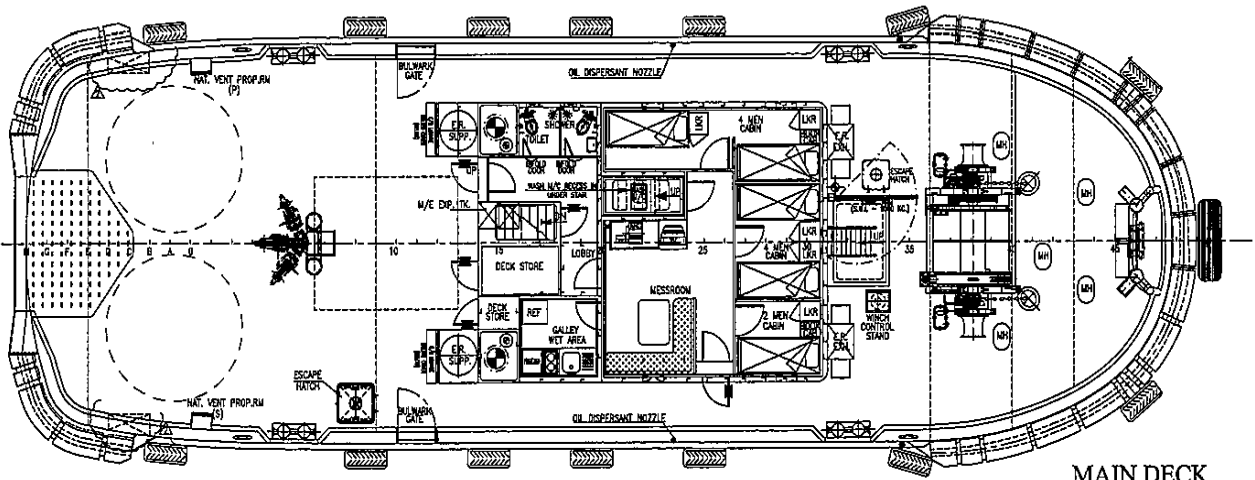


GENERAL ARRANGEMENT

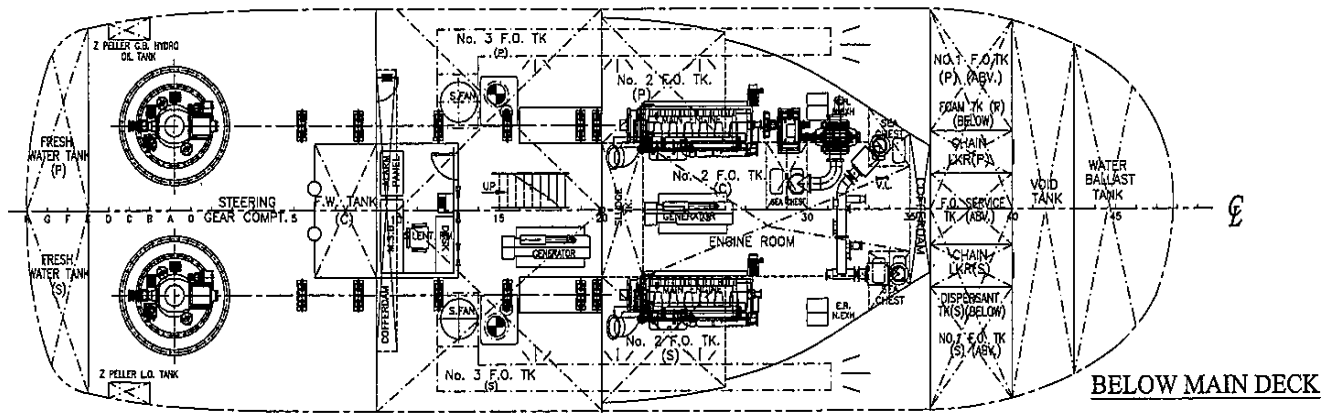
TUG NAME: KST SPHERE & KST SUNRISE



OUTBOARD PROFILE



MAIN DECK



BELOW MAIN DECK