

Name KSP Star & KSP Sun
Port of Registry Malaysia
Year Built 2004



Type Pusher Harbour Tug.
Class Lloyd's Register of Shipping * 100 A1 Tug * LMC (Fire Fighting Capability)

Dimensions:
 Length Overall 27.90 m
 Breadth Moulded 9.00 m
 Draft Design 3.80 m
 Depth Moulded 4.70 m

Tonnage
 Net Tonnage 74 T
 Gross Tonnage 248 T

Speed 12 knots excess

Bollard Pull: 45 T excess

Capacity
 Fuel oil 85 m³
 Fresh water 30 m³
 Foam 6.0 m³
 Dispersant 2.0 m³

Main engines Niigata 6L22HX
 2 x 1800PS

Propulsion 2 x Niigata ZP-21

Propeller Type Skewed, Fixed Pitch

Generator Perkins 1006TWGM
 2 X 90kw, 380V, 3pH, 50Hz

Deck Machinery Anchor winch/ windlass : Plimsoll, electro hydraulic driven. Brake holding 110 T
 Aft Towing Winch : Plimsoll, electro hydraulic driven. Brake holding 110 T

Navigational Equipment Navigational lights, Magnetic Compass, Marine Radar, Echo Sounder, GPS Navigator, VHF Radio, SSB, EPIRB, GMDSS VHF Radio, GMDSS Radar Transponder, Navtex Receiver

Fire fighting system Engine driven Nijhuis model HGT1-250.500 pump. Capacity 1200m³/hr
 - 2 x SKUM fire monitor (600 m³ each)
 - One set Foam Mixing fitting
 - Water Curtain System

Other Oil Dispersant System

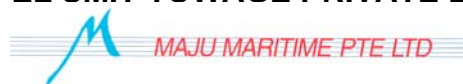
Accommodation 10

Builder Keppel Singmarine Pte Ltd, Singapore

This vessel specification is given in good faith and assumed to be correct. September 2005



KEPPEL SMIT TOWAGE PRIVATE LIMITED



23 Gul Road, Singapore 629356

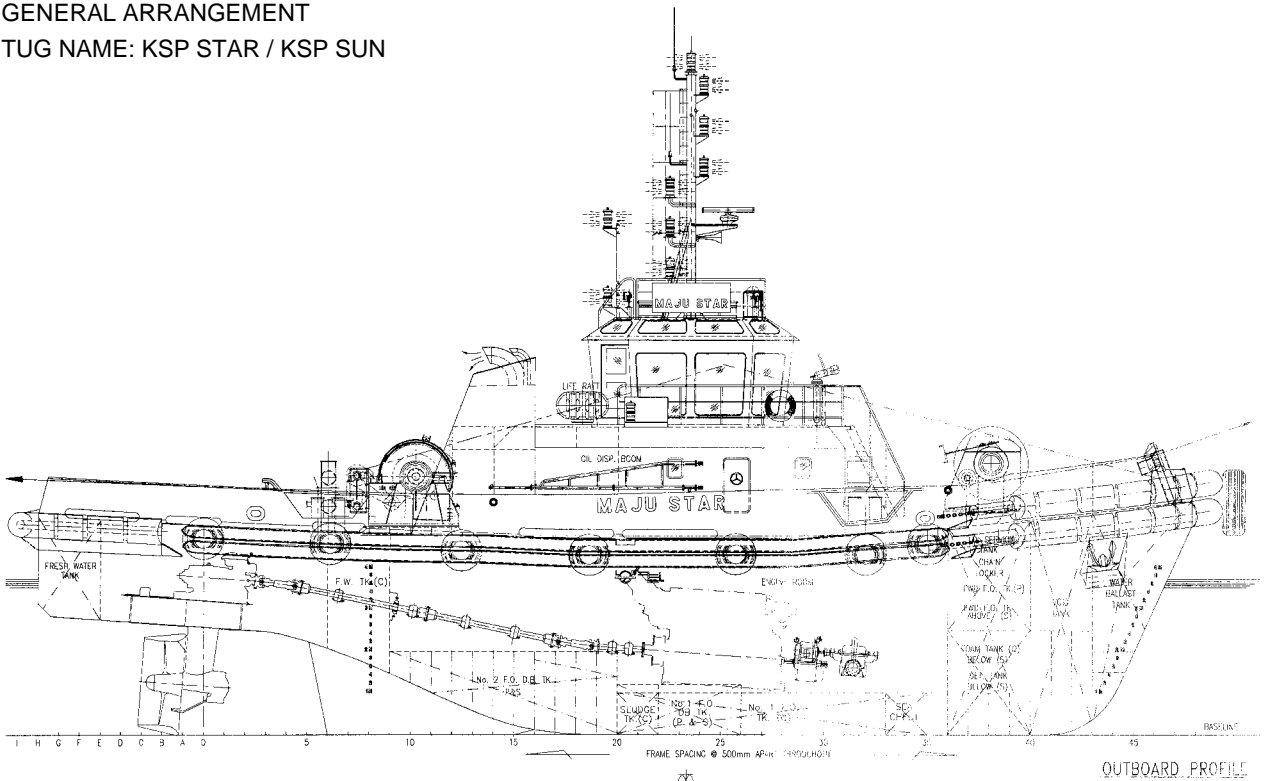
Telephone: +65 666 84 222

Fax: +65 666 84 333

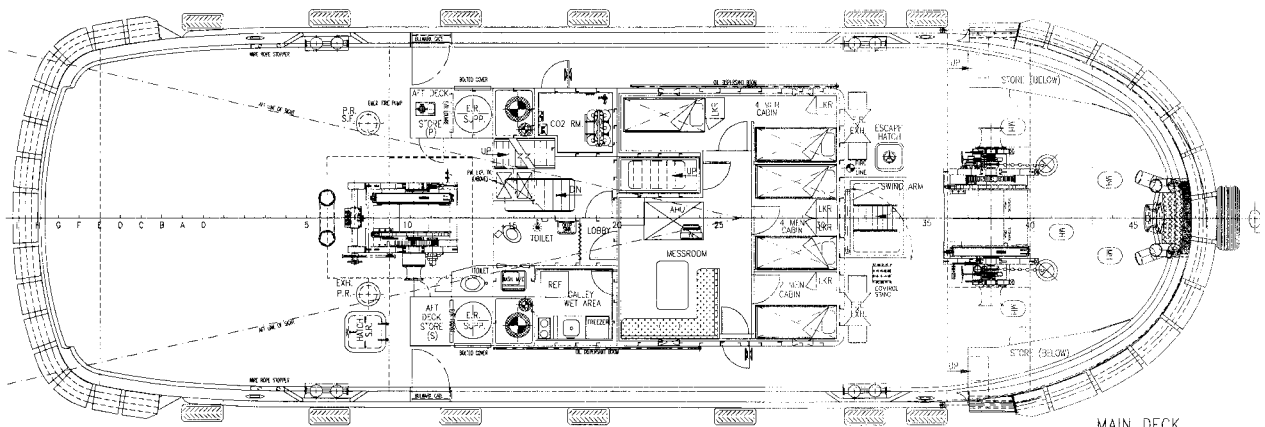
Email: kst@keppelsmit.com.sg

Website: www.keppelsmit.com.sg

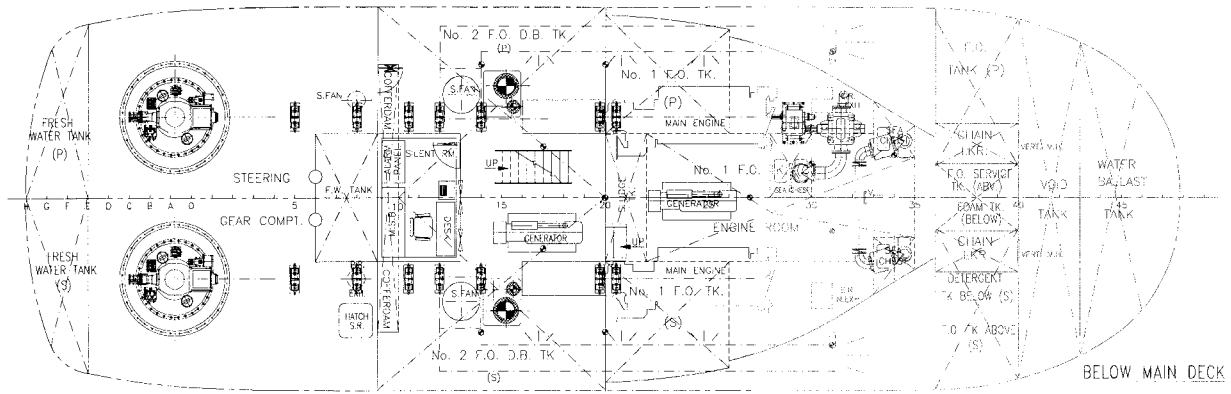
GENERAL ARRANGEMENT
 TUG NAME: KSP STAR / KSP SUN



OUTBOARD PROFILE



MAIN DECK



BELOW MAIN DECK