

Name KST 41 & KST 42
Port of Registry Singapore
Year built 1997



Type Pusher Harbour Tug
Class ABS Maltese Cross A1(E)
 + AMS Towing Services

Dimensions
 Length overall 26.92 m
 Length BP 22.50 m
 Beam moulded 9.00 m
 Depth moulded 4.70 m
 Draft design 3.75 m

Tonnage
 Registered tonnage 81 T
 Gross tonnage 272 T

Speed 12 knots

Bollard Pull 53 T

Capacity
 Fuel 88 m³
 Fresh water 17 m³
 Foam 6 m³
 Dispersant 6 m³

Main Engine
 Niigata 6L26HLX
 2 x 2,000 bhp at 750 rpm

Propulsion
 Niigata ZP-31 fixed pitch propellers with steerable Azimuth thrusters.

Generator
 Detroit AC diesel generator 4-71 T
 2 x 80 kw 50Hz, 3 Phase and 380 Volts.

Navigational Equipment
 Radar, gyro, auto pilot, echo sounder, marine VHF, SSB radio, GPS, magnetic compass.

Deck Machinery
 Fwd : One electro hydraulic windlass / towing winch with brake force 100 T
 Aft : One electro hydraulic towing winch with brake force 100 T

Tow Hook : 60 T SWL

External FiFi Capability
 Half Fire-fighting
 One unit independent diesel engine driven pump capacity 1200 m³/hr x 120 m delivery head, via two units manual control fire monitors capacity 600 m³/hr x 10 bar each on wheelhouse top.

Trajectory Range : 120 m
 Trajectory Height : 65 m
 Two foam proportioners
 Self drenching system : Main deck
 Deck house
 Wheel house

Oil Dispersant System
 2 spray booms of 4.5 m each with spray nozzles for concentrate or chemical dispersant.

Fire Detection Extinguishing System
 Machinery space is fitted with smoke and flame detector and protected with a CO₂ total flooding fire extinguishing system

Accommodation 10 persons

Builder
 Keppel Singmarine Dockyard Pte Ltd, Singapore

This vessel specification is given in good faith and assumed to be correct. July 2004.



KEPPEL SMIT TOWAGE PRIVATE LIMITED



23 Gul Road, Singapore 629356.

Telephone: +65 666 84 222

Fax: +65 666 84 333

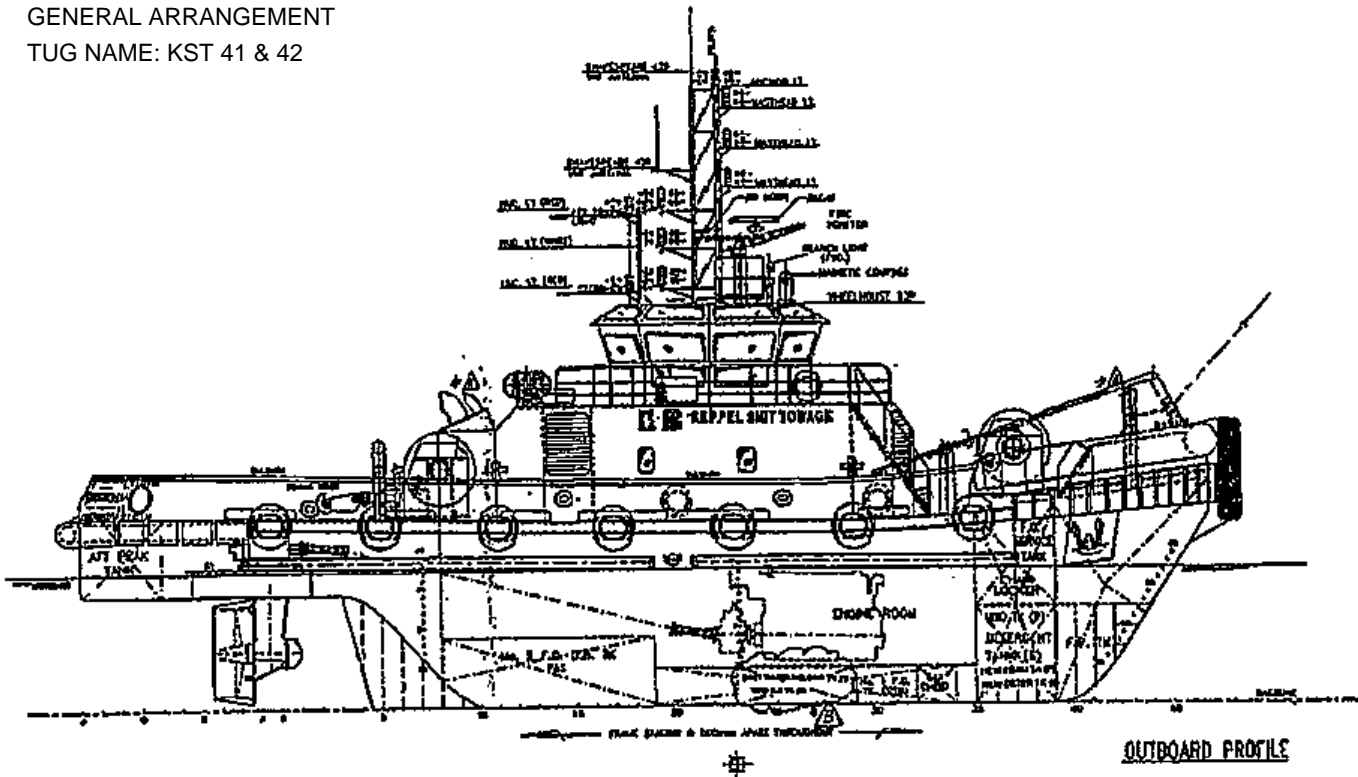
Email: kst@keppelsmit.com.sg

Website: www.keppelsmit.com.sg

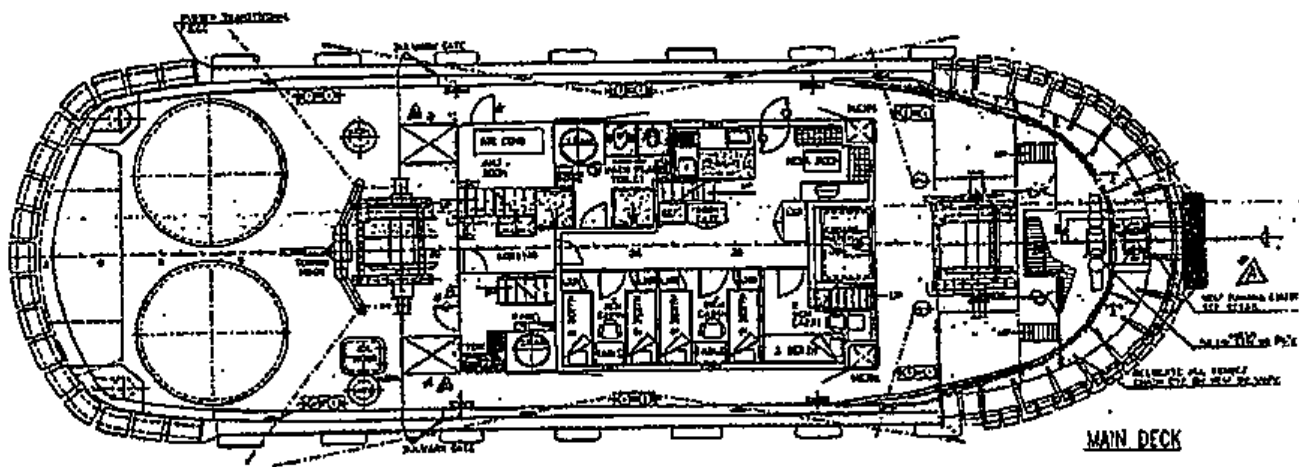


GENERAL ARRANGEMENT

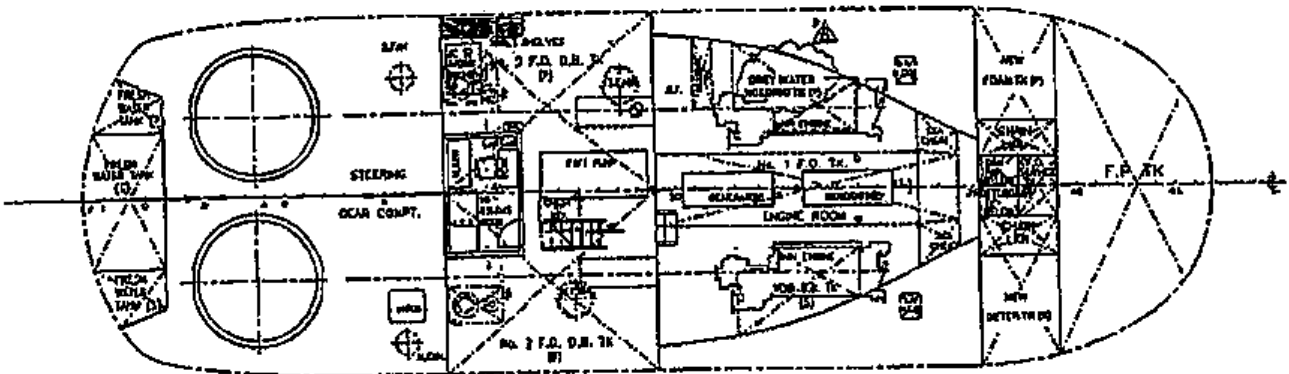
TUG NAME: KST 41 & 42



OUTBOARD PROFILE



MAIN DECK



BELOW MAIN DECK