

# KST 33 & KST 34

**Name** KST 33 & KST 34  
**Port of Registry** Singapore  
**Year Built** 1995



<b>Type</b>	Pusher Harbour Tug
<b>Class</b>	ABS Maltese Cross A1 (E) Towing Vessel (Fire Fighting capability) + AMS
<b>Dimensions</b>	
Length overall	26.33 m
Length B.P.	22.50 m
Beam moulded	8.50 m
Draft loaded	3.50 m
<b>Tonnage</b>	
Registered tonnage	70 T
Gross tonnage	234 T
<b>Speed</b>	12 knots
<b>Bollard pull</b>	42 T excess
<b>Capacity</b>	
Fuel oil	56 m <sup>3</sup>
Fresh water	14 m <sup>3</sup>
Foam	6 m <sup>3</sup>
Dispersant	2 m <sup>3</sup>
<b>Main engine</b>	Niigata 6L25HX 2 x 1,500 bhp @ 750 rpm
<b>Propulsion</b>	Niigata ZP-21 Kaplan type 360° steerable propeller with kort nozzle
<b>Generator</b>	Detroit diesel generator 4-71 T 2 x 80 KVA 5, 3 phase, 380 volts
<b>Deck machinery</b>	Forward: One electro hydraulic windlass / towing winch braking capacity 100 T Aft: One electro hydraulic towing winch braking capacity 100 T Towing hook: 40 T SWL
<b>Navigational equipment</b>	Radar, gyro, auto pilot, echo sounder, marine VHF, SSB radio, magnetic compass
<b>Fire-Fighting system</b>	1 x Detroit Diesel 6V-71N engine 1 x Thomson Kelly & Lewis 150x125-500 fire pump (300 m <sup>3</sup> /hr) 1 x SKUM FJM 100 (manual) monitor
<b>Accommodation</b>	8
<b>Builder</b>	Keppel Singmarine Dockyard Pte Ltd, Singapore

*This vessel specification is given in good faith and assumed to be correct. July 2004.*



**KEPPEL SMIT TOWAGE PRIVATE LIMITED**

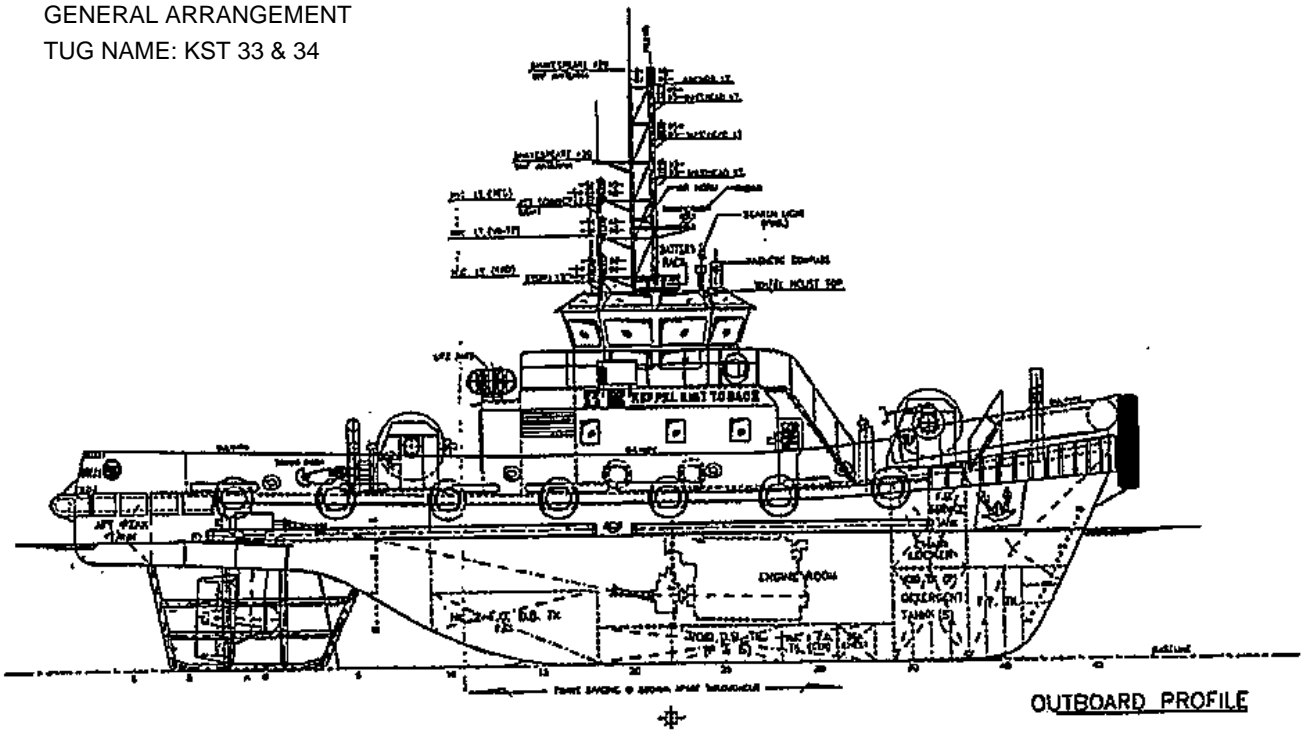


23 Gul Road, Singapore 629356.

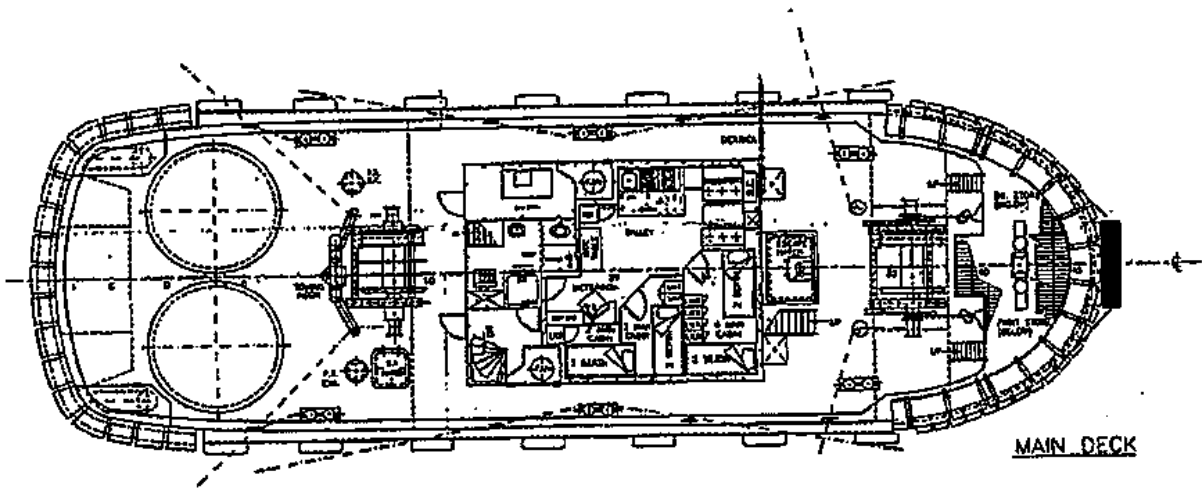
Telephone: +65 666 84 222 Fax: +65 666 84 333

Email: [kst@keppelsmit.com.sg](mailto:kst@keppelsmit.com.sg) Website: [www.keppelsmit.com.sg](http://www.keppelsmit.com.sg)

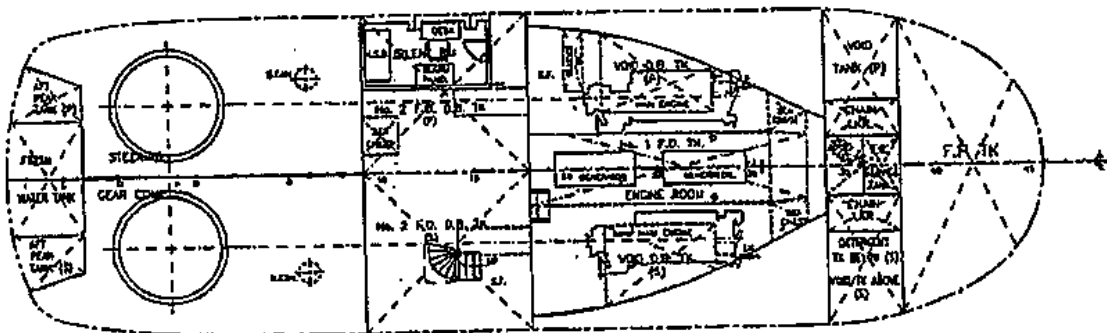
GENERAL ARRANGEMENT  
TUG NAME: KST 33 & 34



OUTBOARD PROFILE



MAIN DECK



BELOW MAIN DECK