

MAJU 511



Type : **PUSHER HARBOUR TUG**

Year Built : 2011

Port of Registry : Singapore

Class : ABS
A1, (Fire Fighting Capability), AMS

Dimensions

Length Overall : 32.00m
Breadth Moulded : 11.50m
Draft Design : Not more than 5.50m
Depth Moulded : 5.20m

Tonnage

Net tonnage : 140 T
Gross tonnage : 469 T

Speed : 12 knots

Bollard pull : 70 Tonnes

Capacity

Fuel : 208.0 m³
Fresh water : 50.0 m³
Foam : 7.0 m³
Dispersant : 3.0 m³

Main engine

Niigata 6L28HX
2 X 2500 bhp at 750 rpm

Propulsion

2 x Niigata ZP-41, fixed pitch propeller with steerable Azimuth thrusters

Generator

Diesel driven generator, 3 x 120 kW
3 phase 4 wire system. 415 volts A.C

Deck machinery

Anchor Windlass / Towing Winch:
Electro hydraulic driven
Brake holding Capacity 150 Tonnes

Aft Towing Winch
Electro hydraulic driven
Brake holding capacity 180 Tonnes

Navigational & Communication Equipment

SSB Radio, Radar, Satellite Compass, Auto Pilot, Echo Sounder, VHF, GPS, Magnetic Compass, Draft Design, Navtex receiver, AIS, GMDSS A3, SSAS, Inmarsat mini-m, SART & EPIRB, Weather Fax

Fire Fighting System (Half FiFi)

- Engine driven horizontal centrifugal pump capacity 1,400 m³/hr at 140meter head
- 2 x SKUM fire monitor (600 m³/hr each)
Throw Length: 100 meter
Throw Height: 45 meter

- One set foam proportional system fitted
- Self drenching system: Main deck
Deck house
Wheel house

- Permanently Installed Carbon-dioxide for Engine room

Others

CCTV for aft towing winch & Engine room

Accommodation

12 persons

Builder

Keppel Nantong Shipyard Co. Ltd

Owners

Maju Maritime Pte Ltd

This vessel specification is given in good faith and assumed to be correct as at 02 July 2019



KEPPEL SMIT TOWAGE PTE LTD

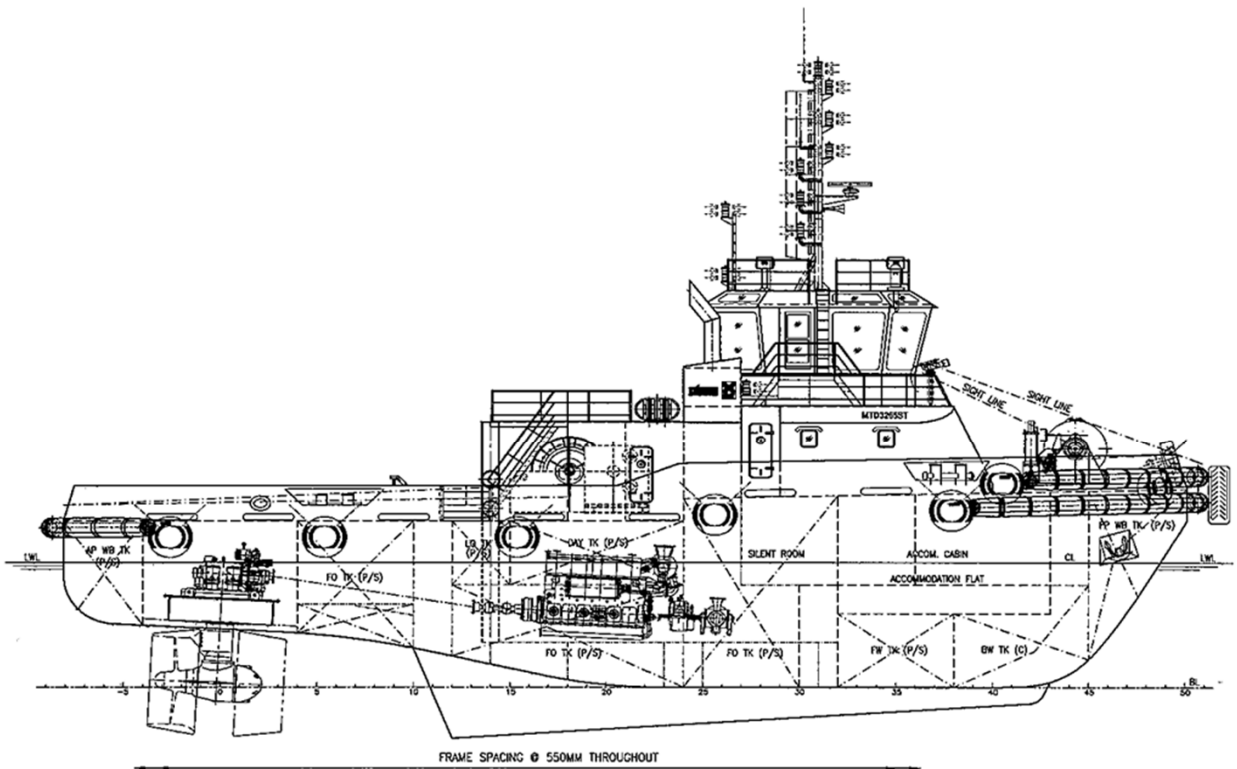


23 Gul Road, Singapore 629356 Telephone: +65 666 84 222 Fax: +65 666 84 333
Email: kst@keppelsmit.com.sg Website: www.keppelsmit.com.sg

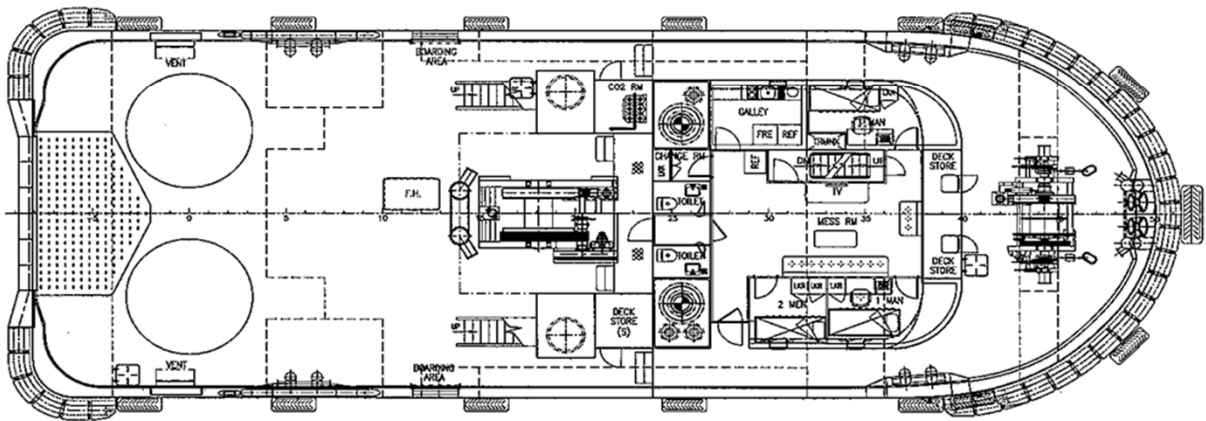


GENERAL ARRANGEMENT

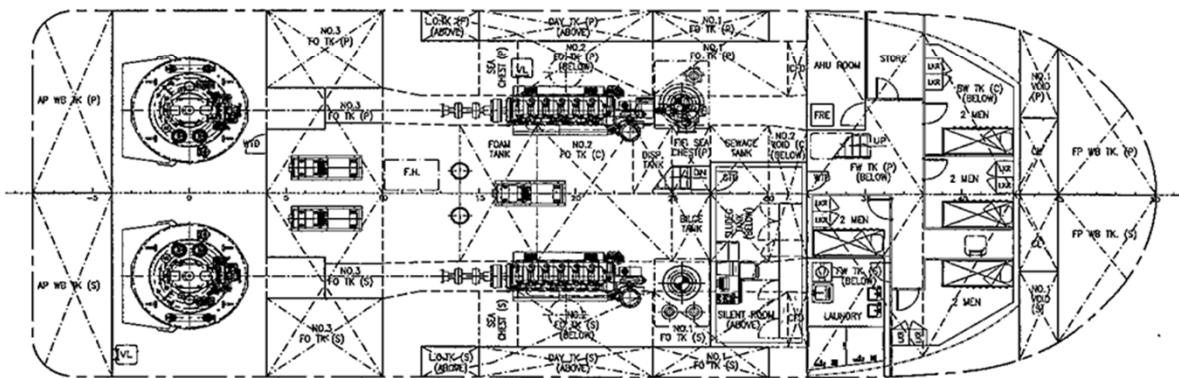
TUG NAME: MAJU 511



PROFILE



MAIN DECK



BELOW MAIN DECK