



# TUG LIMIN KST 41



## PUSHER HARBOUR TUG

### Principal Particulars

Flag	Indonesia
POR	Jakarta
YOB	2006
Builder	Keppel Cebu Shipyard Inc
IMO No	9423097
Call Sign	JZAG
Length OA	30.00 m
Breadth Moulded	10.50 m
Depth Moulded	4.9 m
Draft Design	4.20 m
Gross Tonnage	335 MT
Net Tonnage	100 MT
Bollard Pull	54 T
Max speed	12 knots
Classification	ABS A1, (Fire Fighting Capability), AMS

### Machinery

Main Engine	2 x 2039 BHP Niigata 6L26HLX at 750 rpm
Auxiliary Generator	3 x Cummins, CSM x T5.9-2 83kW, 380V, 3pH, 50Hz
Propulsion	2 x Niigata ZP-31, fixed pitch propeller with steerable Azimuth thrusters

### Deck and Towing / AH Equipment

Anchor Windlass/	Plimsoll electro hydraulic driven
Towing Winch	Brake holding capacity 120 T
Aft Towing Winch	Plimsoll electro hydraulic driven Brake holding capacity 120 T

### Navigation Equipments

Echo Sounder, EPIRB, Marine Radar, SART, GMDSS VHF Radio, GPS Navigator, WASS / GPS Plotter, Magnetic Compass, AIS System, Satellite compass / Auto Pilot, Navtex Receiver, SSB, VHF Radio.

### Cargo Capacities

Fuel Oil	164.0 m3
Fresh Water	39.6 m3
Foam	11.0 m3
Dispersant	3.6 m3

### Fire Fighting System

FIFI pump	1,400 m3/h, engine driven Nijhuis model HGT1-250.500
Gearbox with clutch	Kumera 2FGEC-2340
Fire monitor	2 x 600 m3/hr Throw length : 100 m Throw height : 45 m
One set foam mixing fitting	
Self drenching system:	Main deck Deck House Wheel house

### Others

Oil Pollution Fighting System

### Accommodation

Total	10 pax
-------	--------

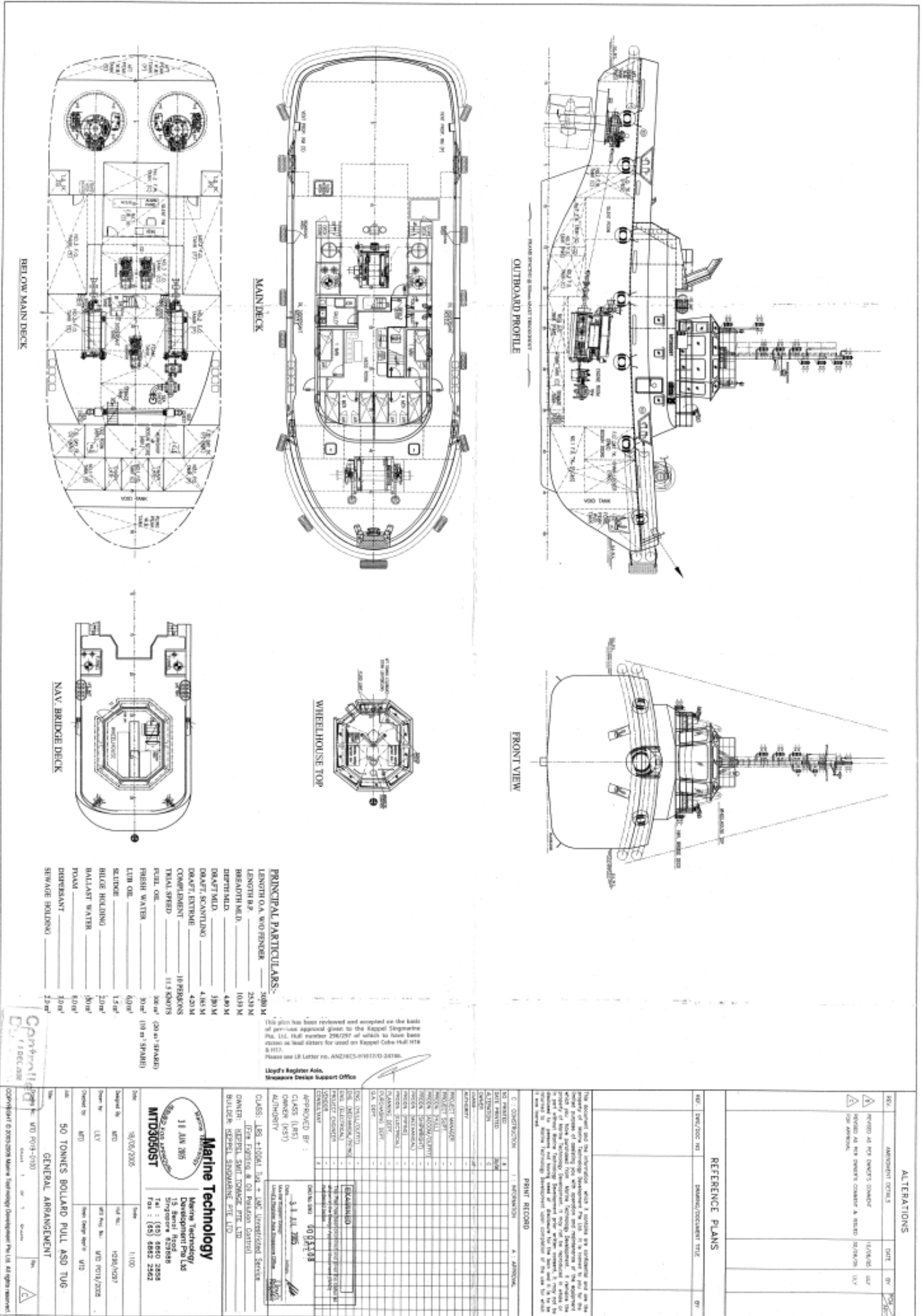
#### PT. LIMIN KST

H Tower Building 15<sup>th</sup> Floor Unit E  
Jl. HR. Rasuna Said Kav C 20-21  
Jakarta 12940

Tel : +62 21-295 333 63  
Fax : +62 21-295 333 61  
Email : contact\_jkt@liminmarine.com



# TUG LIMIN KST 41



**PT. LIMIN KST**  
 H Tower Building 15th Floor Unit E  
 Jl. HR. Rasuna Said Kav C 20-21  
 Jakarta 12940

Tel : +62 21-295 333 63  
 Fax : +62 21-295 333 61  
 Email : contact\_jkt@liminmarine.com