



<b>Type</b>	: <b>PUSHER HARBOUR TUG</b>	<b>Propulsion</b>	Niigata ZP-21 fixed pitch propeller with steerable Azimuth thrusters
<b>Year Built</b>	: 1999	<b>Generator</b>	Detroit AC diesel generator 4-71 T
<b>Port of Registry</b>	: Malaysia	<b>Deck Machinery</b>	Forward: One electro hydraulic windlass/ towing winch Braking capacity 100 T
<b>Class</b>	ABS ⌘ A1 Towing Vessel (Fire Fighting Capability) (E) ⌘ AMS	Aft:	One electro hydraulic towing winch Braking capacity 100 T
<b>Dimensions</b>	Length overall : 26.33 m Length BP : 22.50 m Beam moulded : 9.00 m Depth moulded : 4.70 m	Towing Hook:	40 T SWL
<b>Tonnage</b>	Registered tonnage : 73 T Gross tonnage : 246 T	<b>Navigational Equipment</b>	Radar, Gyro, SSB Radio, Auto Pilot, Echo Sounder, Marine VHF, Magnetic Compass
<b>Speed</b>	: 12 knots	<b>Off-Ship Fire Fighting System</b>	One independent diesel engine 1200 m <sup>3</sup> /hr x 120 m head
<b>Bollard Pull</b>	: 45 T	Two monitors of 600 m <sup>3</sup> /hr each Throw Length : 120 m Throw Height : 65 m One foam mixing fitting Self drenching system:	Main deck Deck house Wheel house
<b>Capacity</b>	Fuel : 70 m <sup>3</sup> Fresh water : 15 m <sup>3</sup> Foam : 6 m <sup>3</sup> Dispersant : 2m <sup>3</sup>	<b>Accommodation</b>	8 persons
<b>Main Engine</b>	Niigata 6L25HX 2 x 1,600 bhp at 750 rpm	<b>Builder</b>	Keppel Singmarine Dockyard Pte. Ltd., Singapore
<b>Propulsion</b>	Niigata ZP-21 fixed pitch propeller with steerable Azimuth thrusters		
<b>Generator</b>	Detroit AC diesel generator 4-71 T 2 x 64 kW, 50Hz, 3 phase and 380 volts		

*This vessel specification is given in good faith and assumed to be correct. December 2010*



**KEPPEL SMIT TOWAGE PTE LTD**

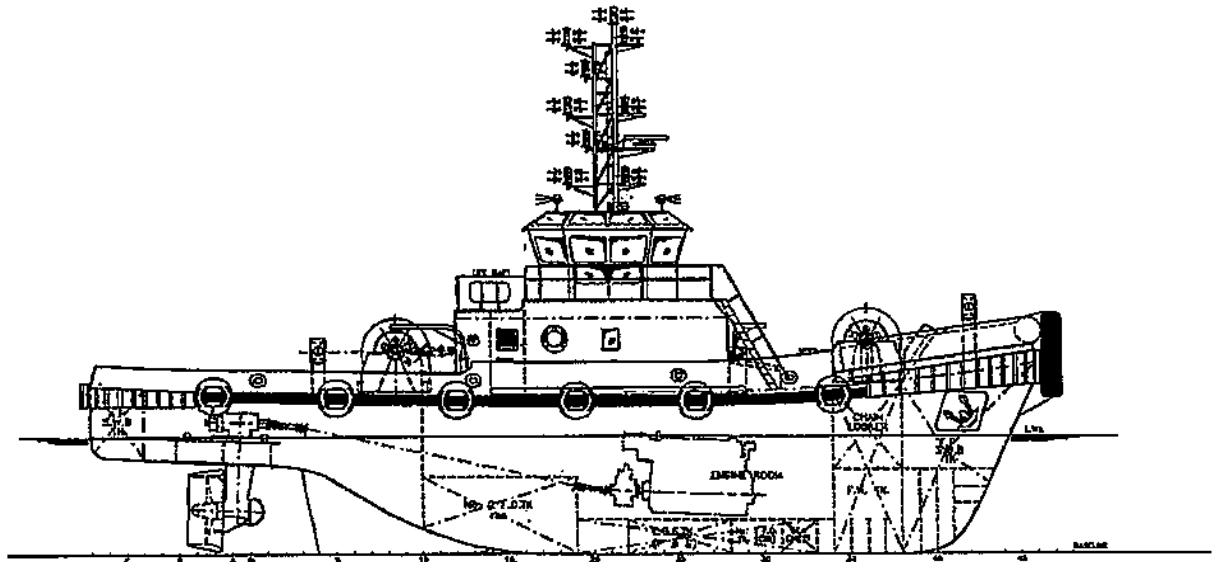


23 Gul Road, Singapore 629356 Telephone: +65 666 84 222 Fax: +65 666 84 333  
Email: kst@keppelsmit.com.sg Website: www.keppelsmit.com.sg

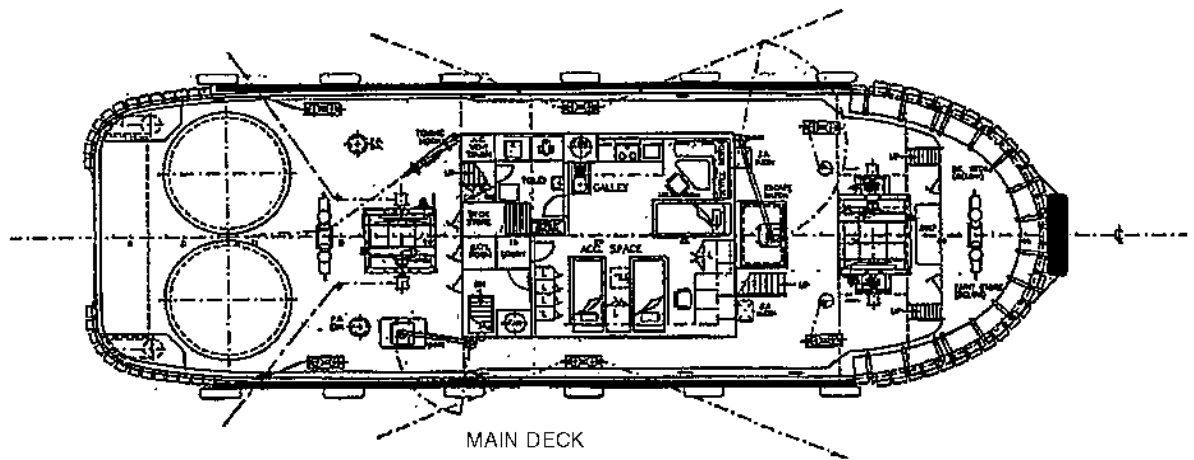


# GENERAL ARRANGEMENT

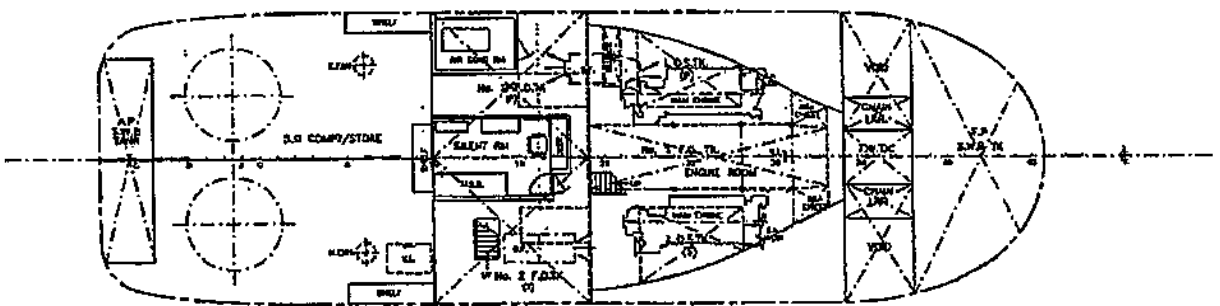
TUG NAME: KEJORA TUJUH



OUTBOARD PROFILE



MAIN DECK



BELOW MAIN DECK