



Type	: TRACTOR HARBOUR TUGS	Generator	3 x Cummins 83 kW, 380V, 3pH, 50Hz
Year Built	: 2005	Deck Machinery	Anchor windlass : Plimsoll electro hydraulic driven
Port of Registry	: Malaysia	Aft Towing Winch :	Plimsoll electro hydraulic driven Braking capacity 120 T
Class	: Lloyd's Register of Shipping ✳ 100 A1 Tug ✳ LMC Fire Fighting Capability	Navigational & Communication Equipment	Echo Sounder, EPIRB, GMDSS Radar Transponder, GMDSS VHF Radio, GPS Navigator, Marine Radar, Navtex Receiver, SSB, VHF Radio
Dimensions	Length Overall : 27.8m Breadth Moulded : 9.80m Design Draft : 5.35m Depth Moulded : 4.35m	Fire fighting system	Main Engine driven Nijhuis model HGT1- 250.500 pump Capacity 1400 m ³ /hr Gearbox with clutch Kumera : 2FGEC-2340 2 x SKUM fire monitor Throw length: 100m Throw height: 45m 1 set Foam Mixing fitting Self drenching system: Main Deck Deck House Wheel House
Tonnage	Net Tonnage : 87 T Gross Tonnage : 290 T	Accommodation	: 10 persons
Speed	: 12 Knots	Others	: Oil Pollution Fighting System
Bollard Pull	: 45 T excess	Builder	: Keppel Singmarine Pte. Ltd.
Capacity	Fuel : 100m ³ Fresh water : 30m ³ Foam : 13m ³ Dispersant : 4m ³		
Main engines	Niigata 2 x1800bhp		
Propulsion	2 x Niigata ZP-21 fixed pitch propeller with steerable Azimuth thrusters		

This vessel specification is given in good faith and assumed to be correct. December 2010

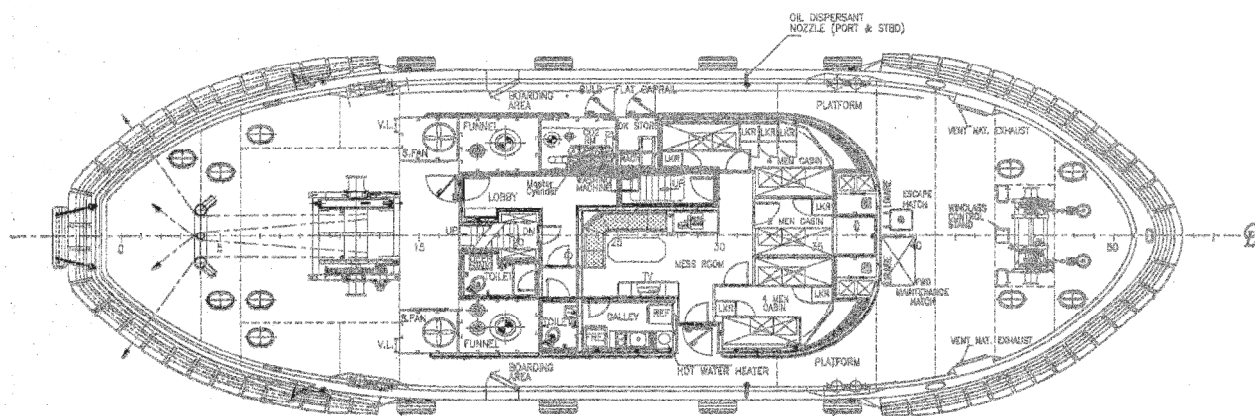
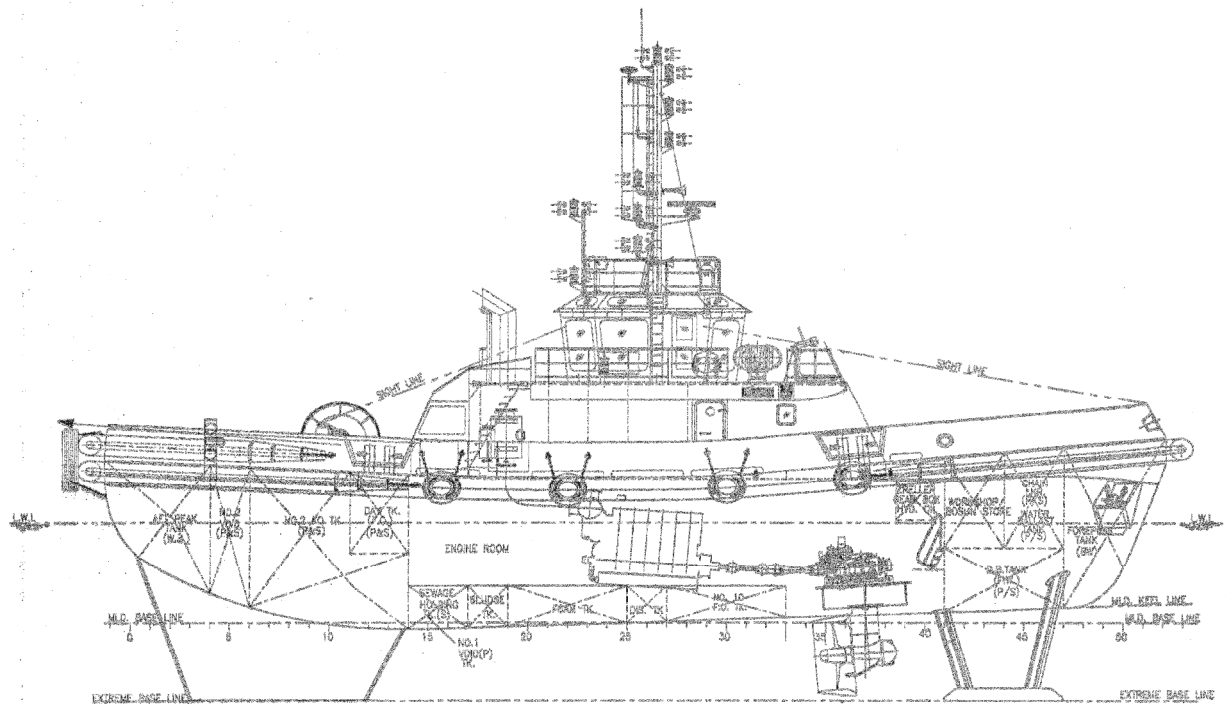


KEPPEL SMIT TOWAGE PTE LTD

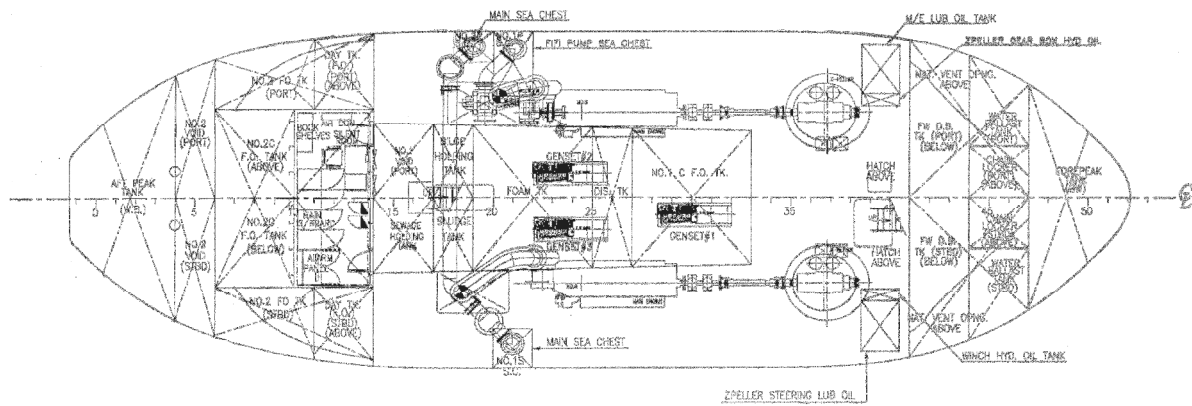


GENERAL ARRANGEMENT

TUG NAME: KEJORA ENAM



MAIN DECK



BELOW MAIN DECK