



Type	: TRACTOR HARBOUR TUG	Generator	3 x Cummins 6BT 5.9 D(M) 83 kW, 380V, 3pH, 50Hz
Year Built	: 2005	Deck Machinery	Anchor windlass : Plimsoll electro hydraulic driven
Port of Registry	: Port Kelang, Malaysia	Aft Towing Winch	Plimsoll electro hydraulic driven Braking capacity 120 T
Class	: ABS ✕ 100 A1 Tug ✕ LMC Fire Fighting Capability	Navigational & Communication Equipment	Echo Sounder, EPIRB, GMDSS Radar Transponder, GMDSS VHF Radio, GPS Navigator, Marine Radar, Navtex Receiver, SSB, VHF Radio
Dimensions	Length Overall : 27.8m Breadth Moulded : 9.80m Design Draft : 5.35m Depth Moulded : 4.35m	Fire fighting system	Main Engine driven Nijhuis model HGT1- 250.500 pump Capacity 1400 m ³ /hr Gearbox with clutch Kumera : 2FGEC-2340 2 x SKUM fire monitor Throw length: 100m Throw height: 45m 1 set Foam Mixing fitting Self drenching system: Main Deck Deck House Wheel House
Tonnage	Net Tonnage : 87 T Gross Tonnage : 290 T	Accommodation	: 10 persons
Speed	: 12 Knots	Others	: Oil Pollution Fighting System
Bollard Pull	: 45 T excess	Builder	: Keppel Singmarine Pte. Ltd.
Capacity	Fuel : 100m ³ Fresh water : 30m ³ Foam : 13m ³ Dispersant : 4m ³	Owner	: Kejora Resources Sdn Bhd
Main engines	Niigata 6L22HLX 2 x1800bhp		
Propulsion	2 x Niigata ZP-21 fixed pitch propeller with steerable Azimuth thrusters		

This vessel specification is given in good faith and assumed to be correct as at 03 July 2019

KEJORA RESOURCES SDN BHD (607204-V)

No. 129-01 & 129-02, Jalan Mutiara Emas 2A, Taman Mount Austin, 81100 Johor Bahru, Johor, Malaysia.

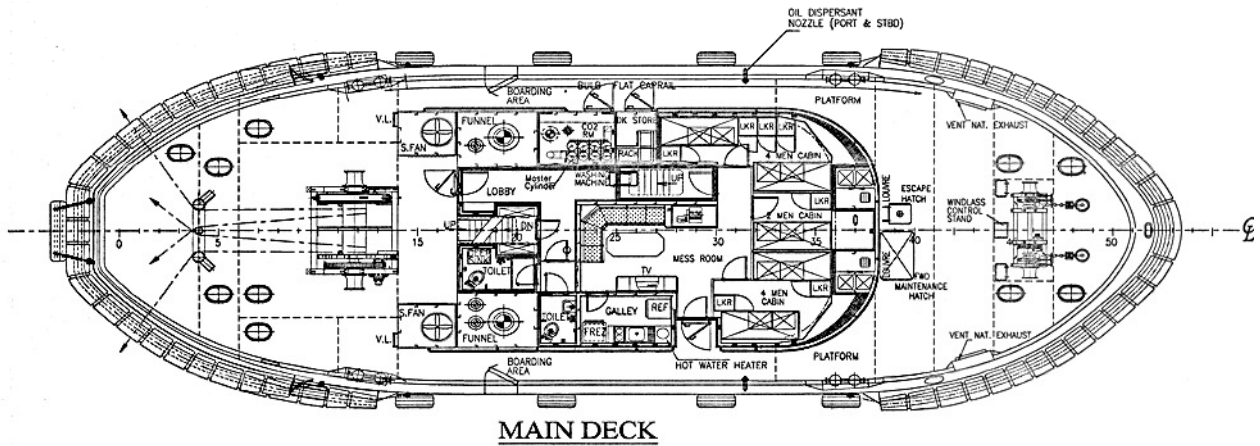
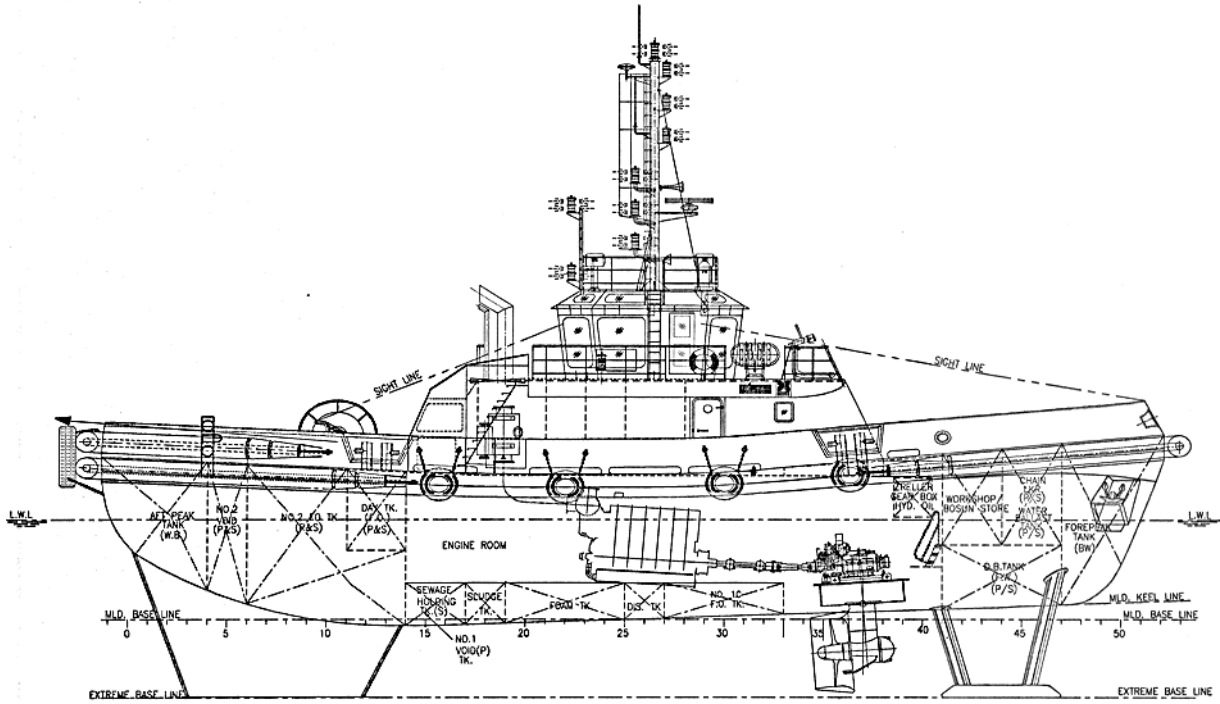
Telephone: +607 364 9070

Fax: +607 364 9362

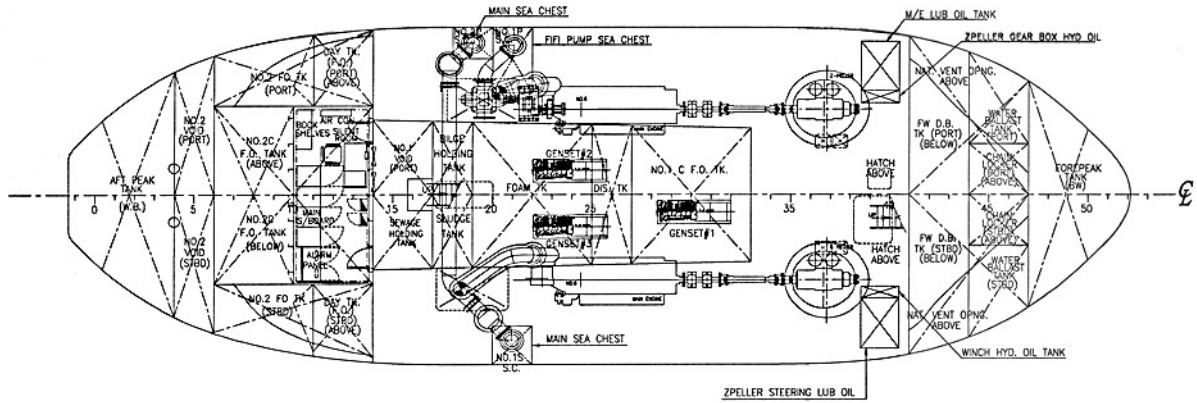
Email: general@kspkejora.com

GENERAL ARRANGEMENT

TUG NAME: KEJORA ENAM



MAIN DECK



BELOW MAIN DECK