



Type : **PUSHER HARBOUR TUG**

Year Built : 1995

Port of Registry : Malaysia

Class

ABS ✕ A1 (E) Towing Vessel ✕ AMS
Fire Fighting Capability

Dimensions

Length Overall : 28 m
Breadth Moulded : 8.50 m
Draft Design : 3.50 m
Depth moulded : 4.70 m

Tonnage

Registered tonnage : 69 T
Gross tonnage : 233 T

Speed : 12 knots

Bollard Pull : 42 T excess

Capacity

Fuel : 56 m³
Fresh water : 14 m³
Foam : 6 m³
Dispersant : 2m³

Main Engine

Niigata 6L25HX
2 x 1,500 bhp at 750 rpm

Propulsion

Niigata ZP-21 Kaplan type 3600 steerable propeller with kort nozzle

Generator

Detroit diesel generator 4-71 T
2 x 80 KVA 5, 3 phase, 380 volts

Deck Machinery

Forward: One electro hydraulic windlass/
towing winch
Braking capacity 100 T

Aft: One electro hydraulic towing winch
Braking capacity 100 T

Towing Hook: 40 T SWL

Navigational Equipment

Radar, Gyro, SSB Radio,
Auto Pilot, Echo Sounder,
Marine VHF, GPS,
Magnetic Compass

Accommodation

8 persons

Builder

Keppel Singmarine Dockyard Pte. Ltd., Singapore

This vessel specification is given in good faith and assumed to be correct. December 2010



KEPPEL SMIT TOWAGE PTE LTD

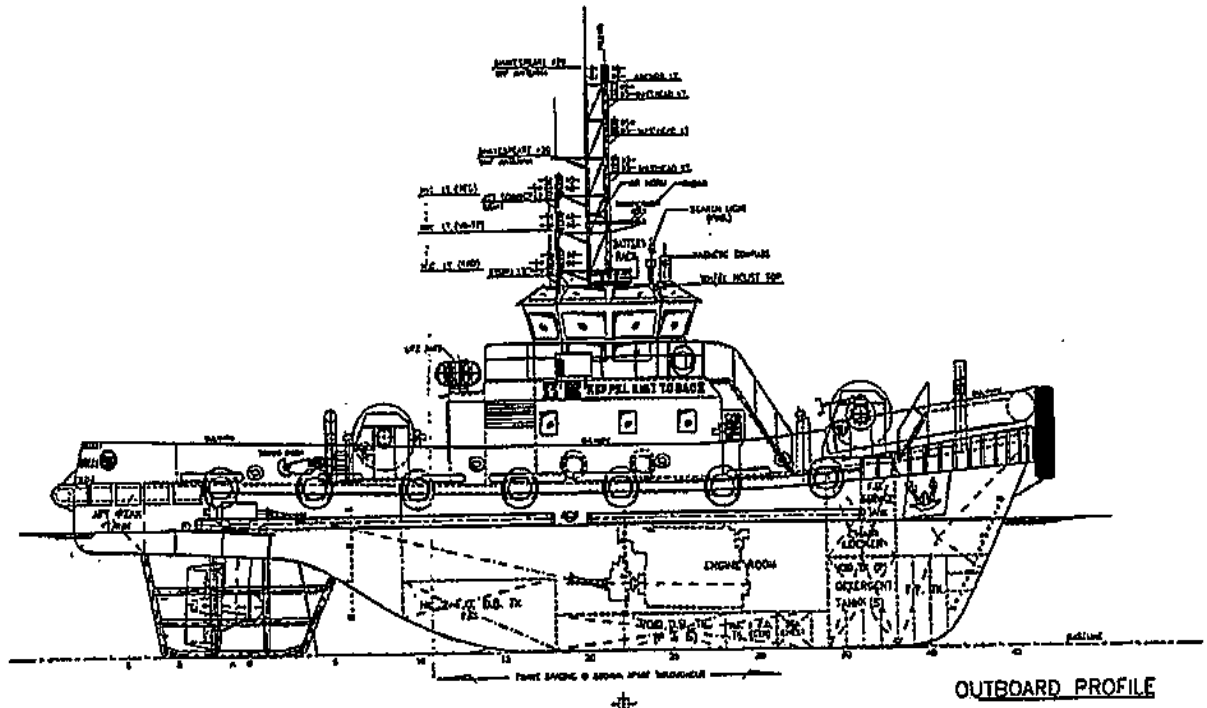


23 Gul Road, Singapore 629356 Telephone: +65 666 84 222 Fax: +65 666 84 333
Email: kst@keppelsmit.com.sg Website: www.keppelsmit.com.sg

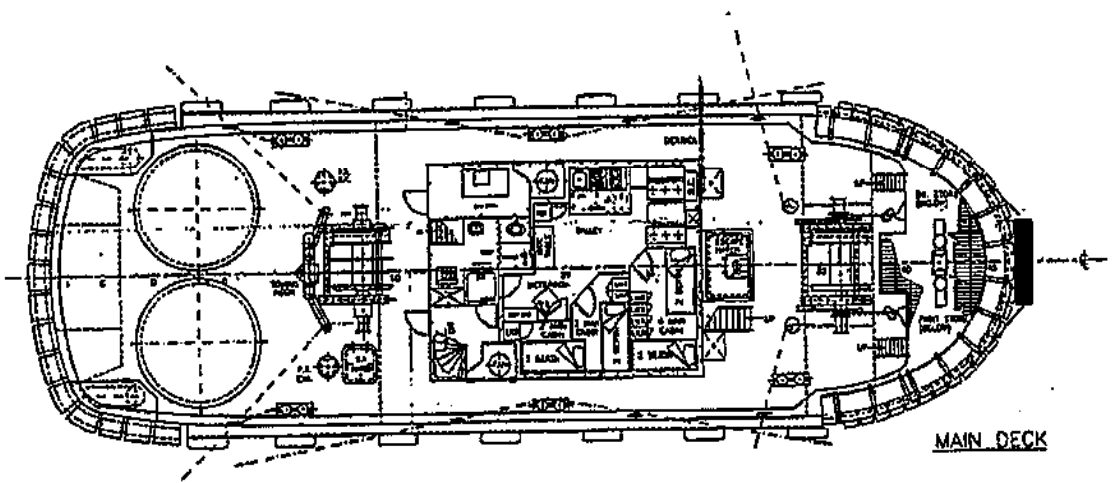


GENERAL ARRANGEMENT

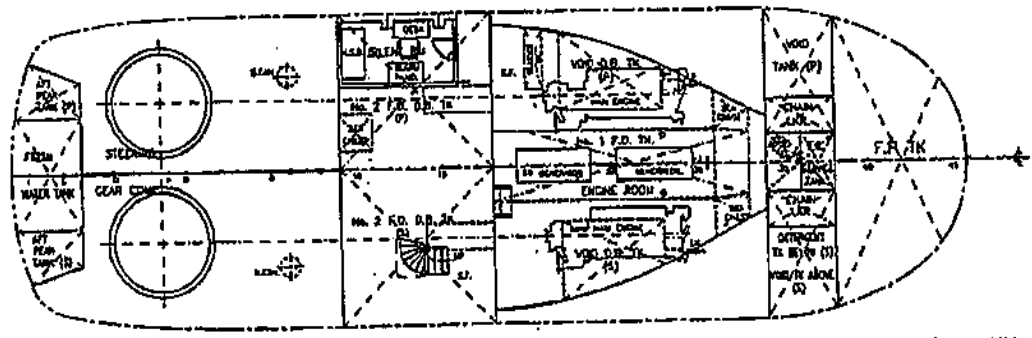
TUG NAME: KEJORA EMPAT



OUTBOARD PROFILE



MAIN DECK



BELOW MAIN DECK