



Type : **PUSHER TUG**

Year Built : **2010**

Port of Registry : Port Kelang, Malaysia

Class : Lloyd's Register of Shipping
 * 100 A1 Tug * LMC UMS
 (Fire Fighting Capability)

Dimensions

Length Overall : 27.90m
 Breadth Moulded : 9.00m
 Draft Design : 3.80m
 Depth Moulded : 4.70m

Tonnage

Net tonnage : 73 T
 Gross tonnage : 246 T

Speed : 12 knots

Bollard pull : 45 tonnes

Capacity

Fuel : 85 m³
 Fresh water : 30 m³
 Foam : 6.0 m³
 Dispersant : 2.0 m³

Main engine

Niigata 6L25HX
 - 2 X 1800 PS X 750 rpm

Propulsion

2 X Niigata ZP-21 fixed pitch propeller
 With steerable Azimuth thrusters.

Generator

Cummins 6CT8.3 D(M)
 - 2 X 95kW, 380V, 3pH, 50Hz

Deck machinery

Anchor Winch / Windlass:
 - Plimsoll
 - Electro hydraulic driven

Aft Towing Hook

- SWL 45 tonnes

Navigational & Communication Equipment

Echo Sounder, EPIRB, GMDSS Radar Transponder,
 GMDSS VHF Radio, Magnetic Compass, VHF
 Radio,
 GPS Navigator, Navtex Receiver, SSB, Marine
 Radar.

Others: Oil Pollution Fighting System.

Fire Fighting System

- Engine driven Nijhuis model HGT1-250.500 pump.
 - Gearbox with Dutch Kumera: 2FGEC-2280
 - 2 x SKUM fire monitor (600 m³/hr each)
 Throw Length: 100 m
 Throw Height: 45 m
 - 1 set foam mixing fitting
 - Self drenching system

Accommodation

8 persons

Builder

Keppel Singmarine Pte Ltd

Owners

Kejora Resources Sdn Bhd

This vessel specification is given in good faith and assumed to be correct 18 March 2014

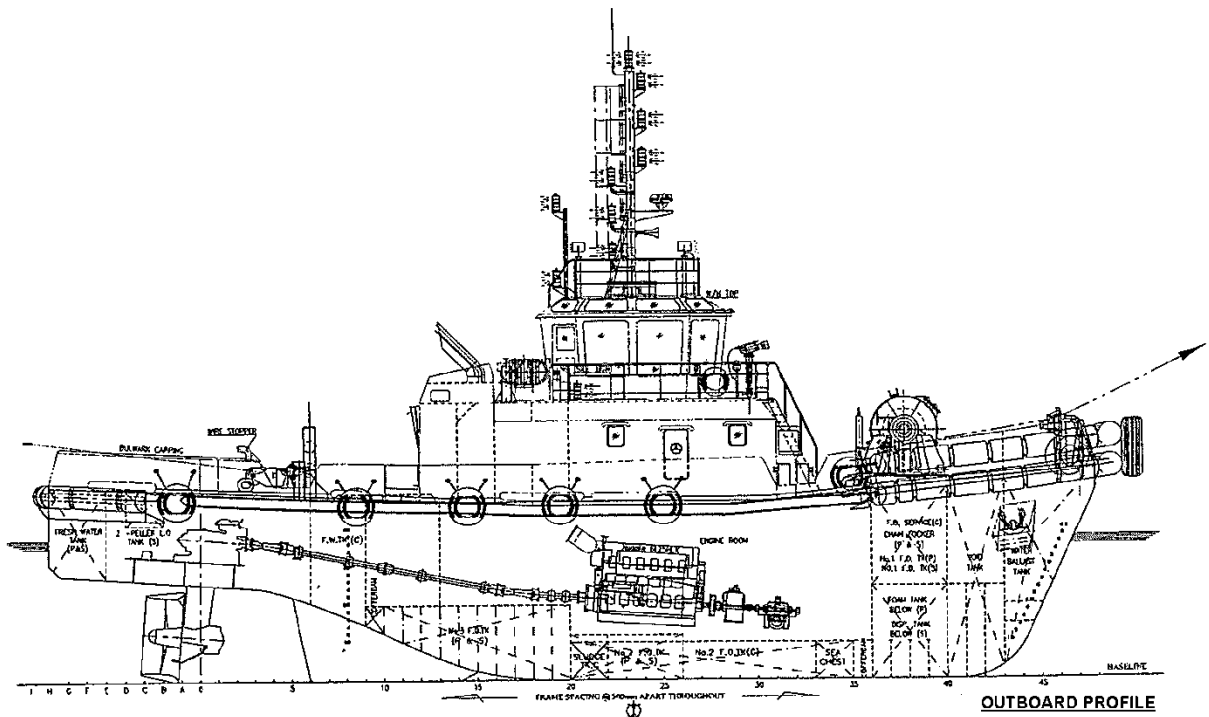


KEPPEL SMIT TOWAGE PTE LTD

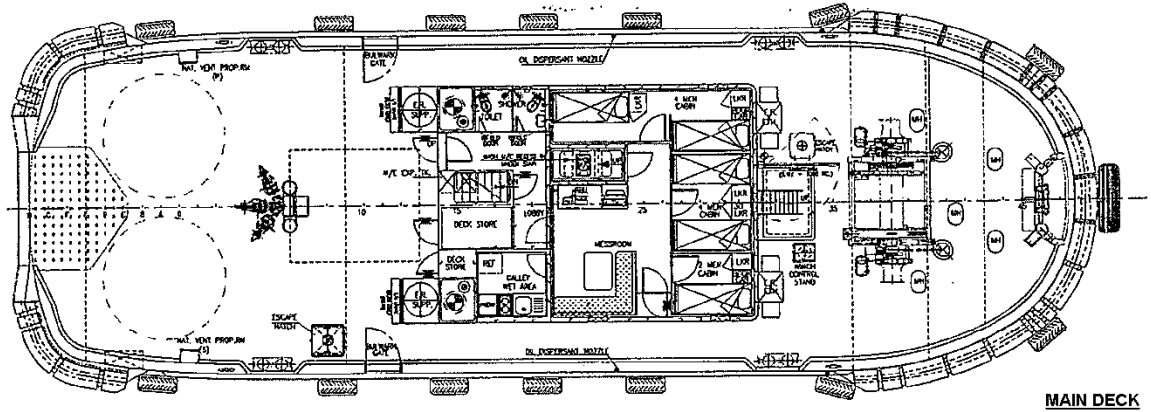


GENERAL ARRANGEMENT

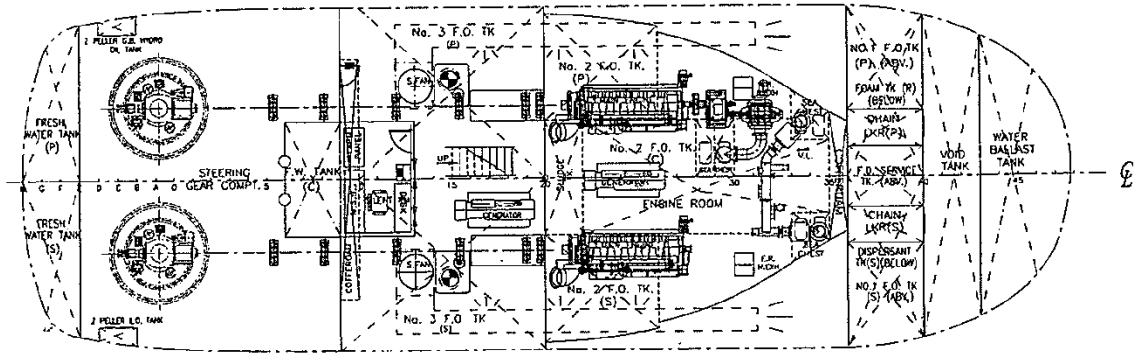
TUG NAME: KEJORA SUTRA



OUTBOARD PROFILE



MAIN DECK



BELOW MAIN DECK