

KEJORA 59



Type : **PUSHER HARBOUR TUG**

Year Built : **2011**

Port of Registry : **Port Kelang, Malaysia**

Class : Lloyd's Register of Shipping
: ✕ 100 A1 Tug ✕ LMC
unrestricted service Fire
Fighting Capability &
Oil Pollution Control

Dimensions

Length Overall : 32.00m
Breadth Moulded : 11.50m
Draft Design : Not more than 5.50m
Depth Moulded : 5.20m

Tonnage

Net tonnage : 140 T
Gross tonnage : 469 T

Speed : 12 knots

Bollard pull : 70 Tonnes

Capacity

Fuel : 182.0 m³
Fresh water : 50.0 m³
Foam : 7.0 m³
Dispersant : 3.0 m³

Main engine

Niigata 6L28HX
2 X 2500 bhp at 750 rpm

Propulsion

2 x Niigata ZP-41, fixed pitch propeller with
steerable Azimuth thrusters

Generator

Diesel driven generator, 3 x 120 kW
3 phase 4 wire system. 415 volts A.C

Deck machinery

Anchor Windlass / Towing Winch:
Electro hydraulic driven
Brake holding Capacity 150 Tonnes

Aft Towing Winch
Electro hydraulic driven
Brake holding capacity 180 Tonnes

Navigational & Communication Equipment

SSB Radio, Radar, Satellite Compass, Auto Pilot, Echo
Sounder, VHF, GPS, Magnetic Compass,
Draft Design, Navtex receiver, AIS, GMDSS, SSAS,
Inmarsat mini-m, SART & EPIRB, Weather Fax

Fire Fighting System (Half FiFi)

- Engine driven horizontal centrifugal pump capacity
1,400 m³/hr at 140meter head
- 2 x SKUM fire monitor (600 m³/hr each)
Throw Length: 100 meter
Throw Height: 45 meter

- One set foam proportional system fitted
- Self drenching system: Main deck
Deck house
Wheel house
- Permanently Installed Carbon-dioxide for Engine
room

Others

CCTV for aft towing winch & Engine room

Accommodation

12 persons

Builder

Keppel Nantong Shipyard Co. Ltd

Owners

Kejora Resources Sdn Bhd

This vessel specification is given in good faith and assumed to be correct 01 August 2013



KEPPEL SMIT TOWAGE PTE LTD

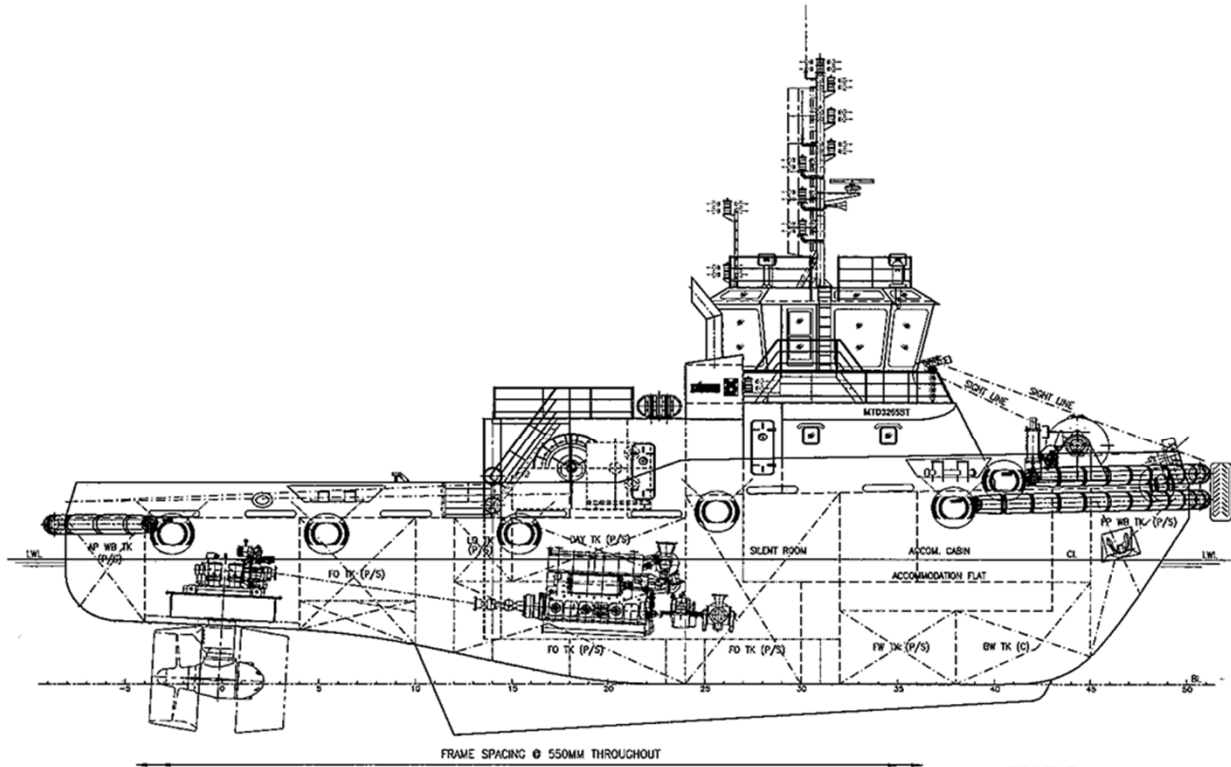


23 Gul Road, Singapore 629356 Telephone: +65 666 84 222 Fax: +65 666 84 333
Email: kst@keppelsmit.com.sg Website: www.keppelsmit.com.sg

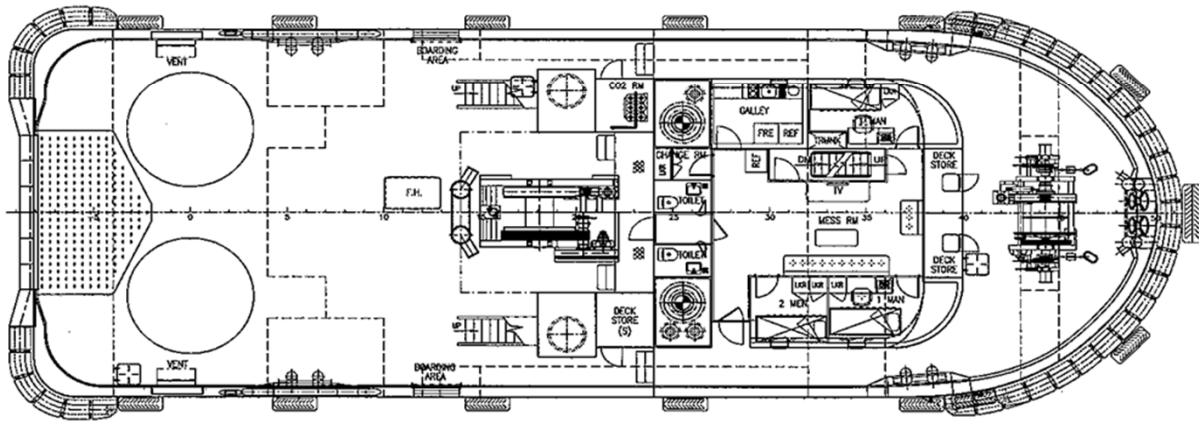


GENERAL ARRANGEMENT

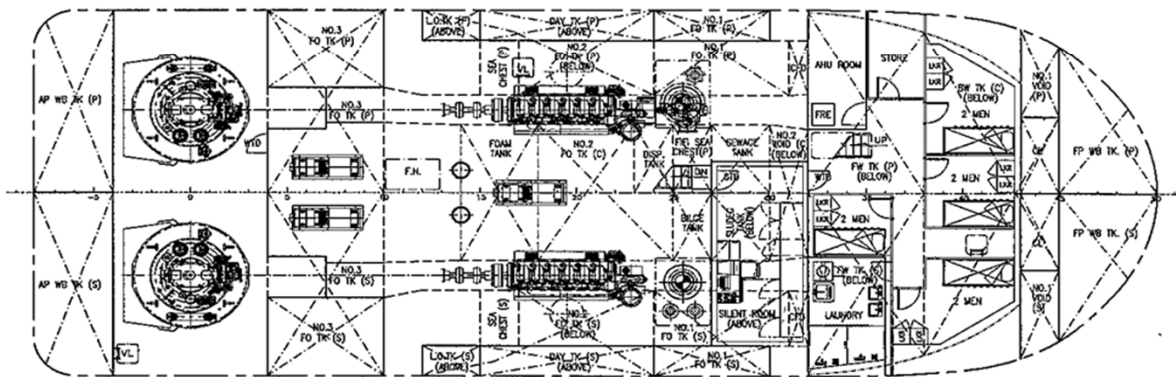
TUG NAME: KEJORA 59



PROFILE



MAIN DECK



BELOW MAIN DECK