



Type : **PUSHER HARBOUR TUGS**
Year Built : **2013**
Port of Registry : Singapore
Class : American Bureau of Shipping
 A1, (Fire Fighting Capability), AMS

Dimensions
 Length Overall : 27.90m
 Breadth Moulded : 9.00m
 Draft Design : 3.80m
 Depth Moulded : 4.70m

Tonnage
 Net tonnage : 73 T
 Gross tonnage : 246 T

Speed : 12 knots

Bollard pull : 45 tonnes

Capacity
 Fuel : 110 m³
 Fresh water : 34 m³
 Foam : 5.6 m³
 Dispersant : 5.6 m³

Main engine
 Niigata 6L26HLX
 - 2 X 1800 PS X 750 rpm

Propulsion
 2 X Niigata ZP-21 fixed pitch propeller
 With steerable Azimuth thrusters

Generator
 Cummins 6CT8.3 D(M)
 - 2 X 95kW, 380V, 3pH, 50Hz

Deck machinery
 Anchor Winch / Windlass:
 - Plimsoll
 - Electro hydraulic driven
 Towing Winch:
 - Rated Pull: 50/25KN x 20/50m/min(1st layer)
 - Brake holding: 980KN (static, 1st layer)
 Aft Towing Hook:
 - SWL 45 tonnes

Navigational & Communication Equipment
 Echo Sounder, EPIRB, GMDSS Radar
 Transponder,
 GMDSS VHF Radio, Magnetic Compass, VHF
 Radio,
 GPS Navigator, Navtex Receiver, SSB, Marine
 Radar.

Others: Oil Pollution Fighting System.

Fire Fighting System
 - Engine driven Nijhuis model HGT1-250.500 pump.
 1,400 m³/hr x 140 at 2,000 RPM.
 - Gearbox with Dutch Kumera: 2FGEC-2280
 - 2 x SKUM fire monitor (600 m³/hr each)
 Throw Length: 100 m
 Throw Height: 45 m
 - 1 set foam mixing fitting
 - Self drenching system

Accommodation
 10 persons

Builder
 Keppel Nantong Shipyard Co. Ltd.

Owner
 Keppel Smit Towage Pte Ltd

This vessel specification is given in good faith and assumed to be correct as at 02 July 2019



KEPPEL SMIT TOWAGE PTE LTD

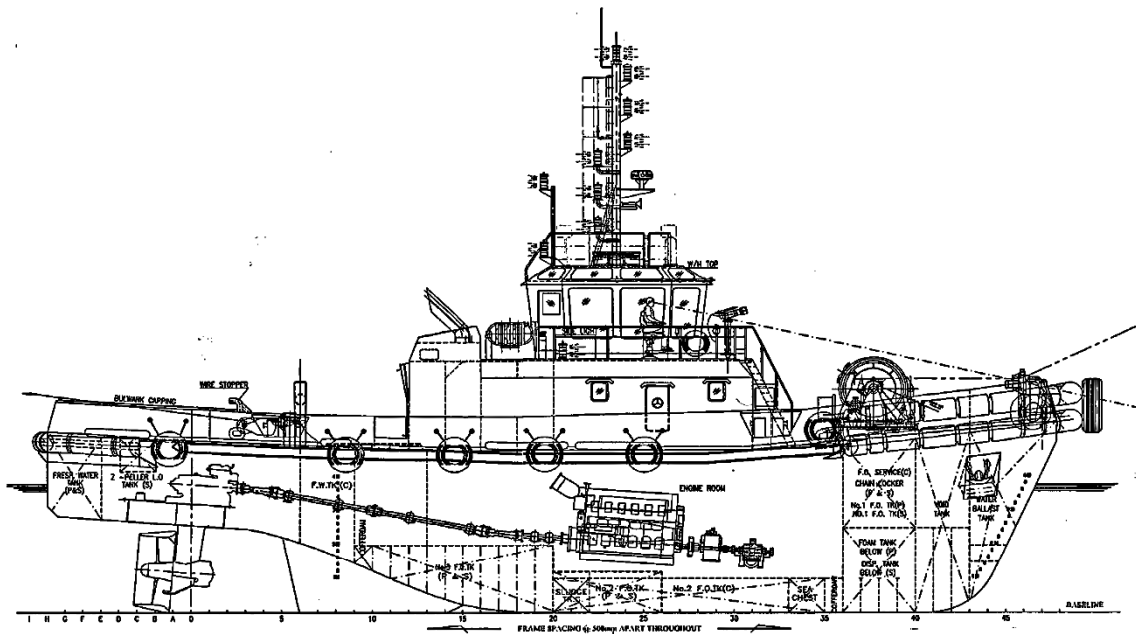


23 Gul Road, Singapore 629356 Telephone: +65 666 84 222 Fax: +65 666 84 333
 Email: kst@keppelsmit.com.sg Website: www.keppelsmit.com.sg

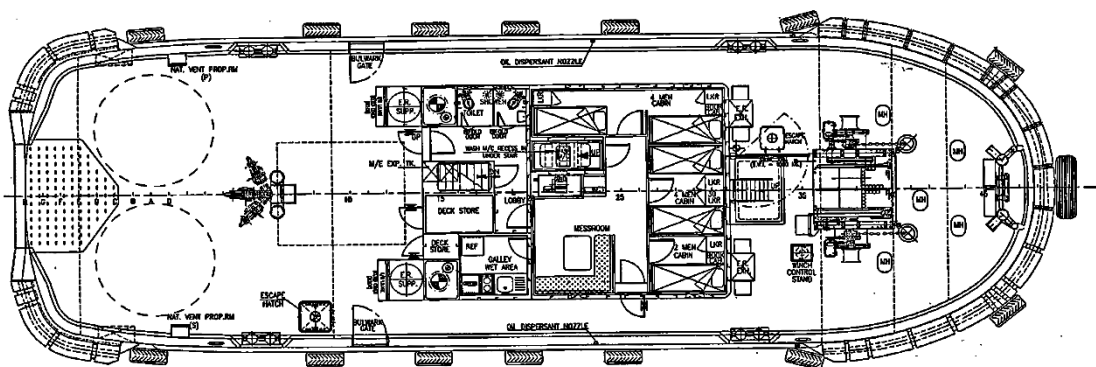


GENERAL ARRANGEMENT

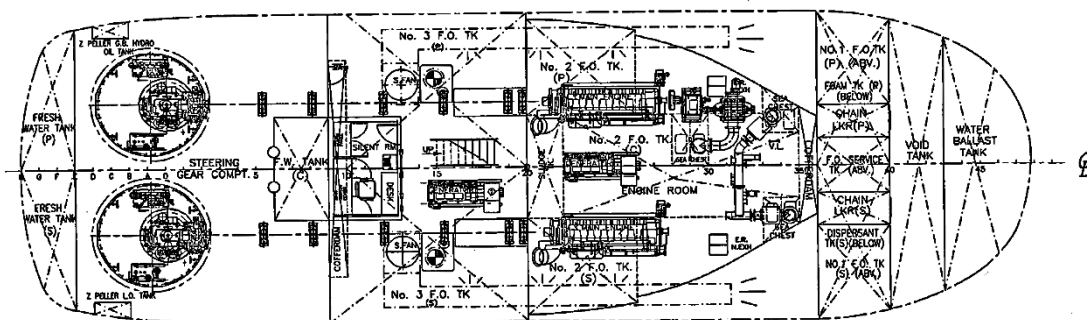
TUG NAME: KST SUMMIT



OUTBOARD PROFILE



MAIN DECK



BELOW MAIN DECK