



Type : TRACTOR HARBOUR TUGS

Year Built : 2005

Port of Registry : Port Kelang, Malaysia

Class

American Bureau of Shipping
 ✕ A1 ✕ AMS

Dimensions

Length Overall : 27.8m
 Breadth Moulded : 9.80m
 Design Draft : 5.35m
 Depth Moulded : 4.35m

Tonnage

Net Tonnage : 87 T
 Gross Tonnage : 290 T

Speed : 12 Knots

Bollard Pull : 45 T excess

Capacity

Fuel : 100m³
 Fresh water : 30m³
 Foam : 13m³
 Dispersant : 4m³

Main engines

Niigata
 2 x1800bhp

Propulsion

2 x Niigata ZP-21 fixed pitch propeller with steerable Azimuth thrusters

Generator

3 x Cummins
 83 kW, 380V, 3pH, 50Hz

Deck Machinery

Anchor windlass : Plimsoll electro hydraulic driven

Aft Towing Winch : Plimsoll electro hydraulic driven

Braking capacity 120 T

Navigational & Communication Equipment

Echo Sounder, EPIRB, GMDSS Radar Transponder, GMDSS VHF Radio, GPS Navigator, Marine Radar, Navtex Receiver, SSB, VHF Radio

Fire fighting system

Main Engine driven Nijhuis model HGT1- 250.500 pump
 Capacity 1400 m³/hr
 Gearbox with clutch Kumera : 2FGEC-2340
 2 x SKUM fire monitor
 Throw length: 100m
 Throw height: 45m
 1 set Foam Mixing fitting
 Self drenching system: Main Deck
 Deck House
 Wheel House

Accommodation

10 persons

Others

Oil Pollution Fighting System

Builder

Keppel Singmarine Pte. Ltd.

This vessel specification is given in good faith and assumed to be correct on 15 August 2017



KEPPEL SMIT TOWAGE PTE LTD

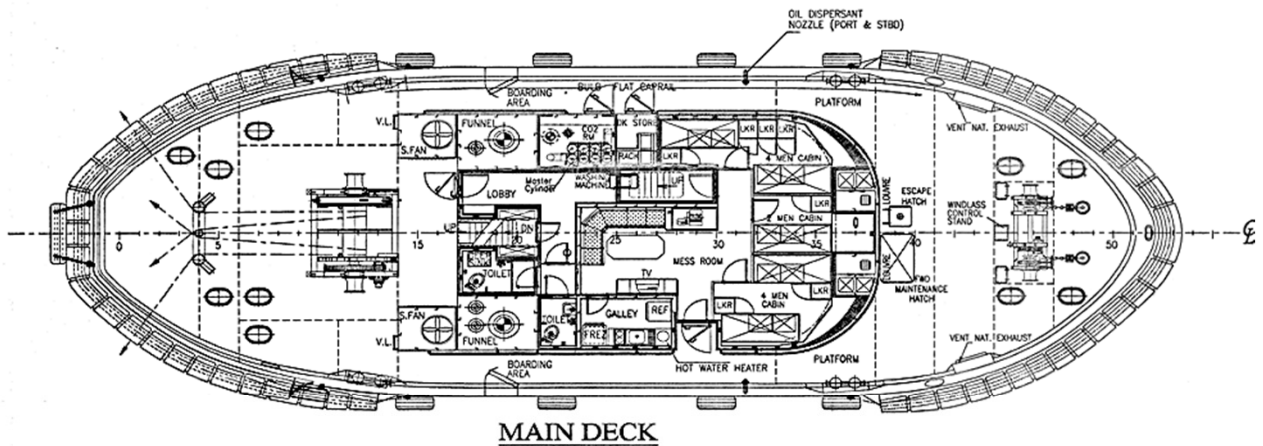
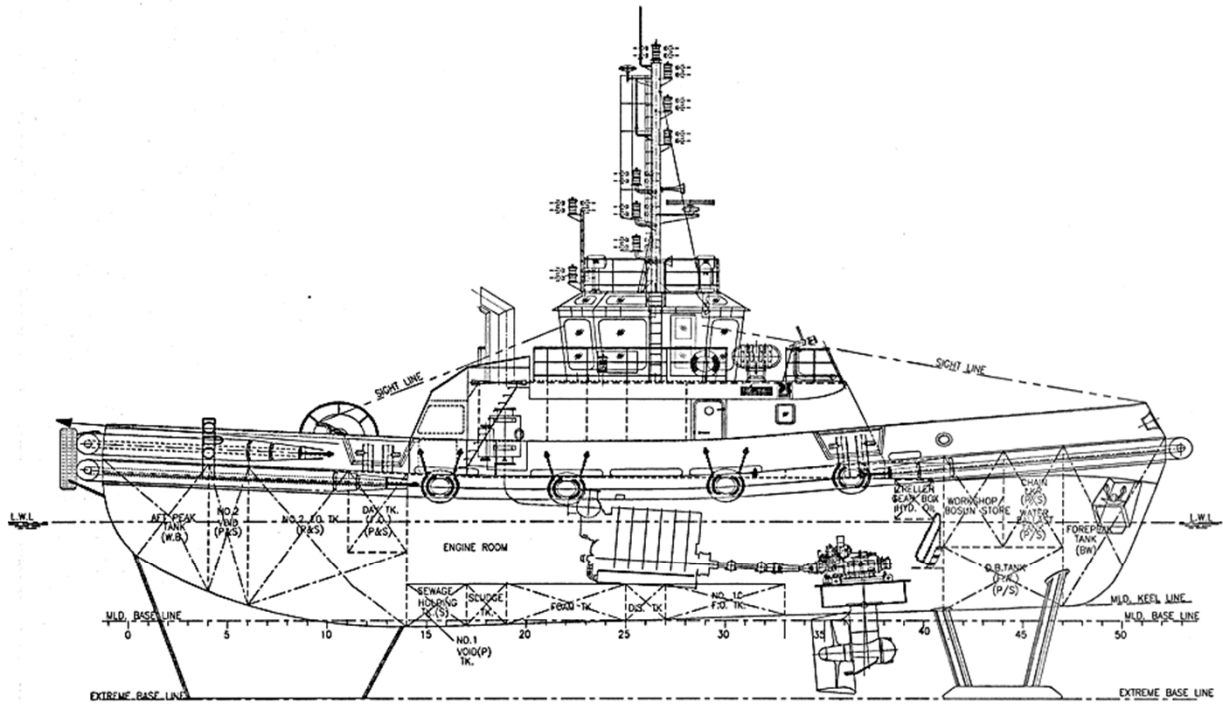


23 Gul Road, Singapore 629356 Telephone: +65 666 84 222 Fax: +65 666 84 333
 Email: kst@keppelsmit.com.sg Website: www.keppelsmit.com.sg

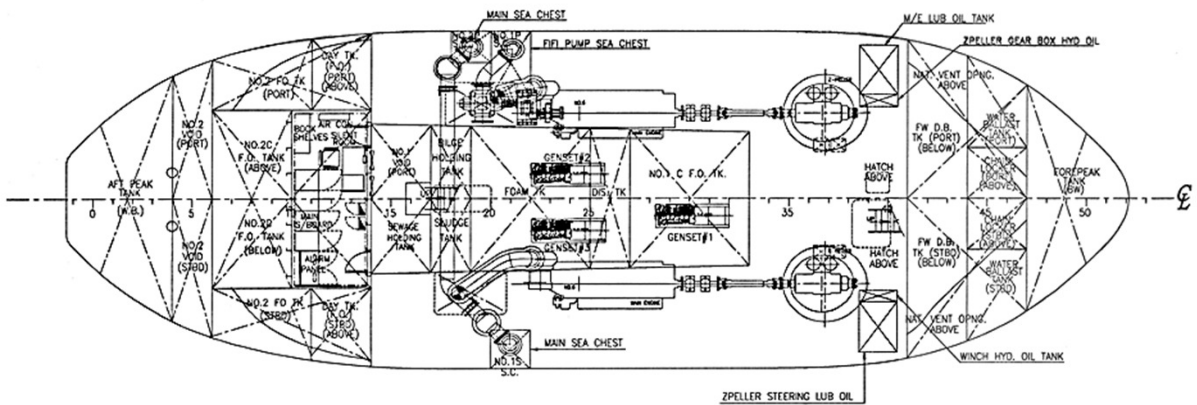


GENERAL ARRANGEMENT

TUG NAME: KEJORA SPACE



MAIN DECK



BELOW MAIN DECK