



Type : **PUSHER HARBOUR TUG**

Year Built : 2006

Port of Registry : Singapore

Class

Lloyd's Register of Shipping
 ✕ 100 A1 Tug ✕ LMC
 Fire Fighting Capability

Dimensions

Length Overall : 30.0 m
 Breadth Moulded : 10.5 m
 Draft Design : 4.2 m
 Depth Moulded : 4.9 m

Tonnage

Net Tonnage : 100
 Gross Tonnage : 335

Speed : 12 knots

Bollard Pull: : 54 Ton

Capacity

Fuel oil : 164.0 m³
 Fresh water : 39.6 m³
 Foam : 11.0 m³
 Dispersant : 3.6 m³

Main Engines

Niigata 6L26HLX
 2 x 2039 bhp at 750 rpm

Propulsion

2 x Niigata ZP-31 fixed pitch propeller with steerable Azimuth thrusters

Generators

3 x Cummins, CSM x T5.9 - 2
 83 kW, 380V, 3ph, 50Hz

Deck Machinery

Anchor windlass/ Towing Winch :
 Plimsoll electro hydraulic driven
 Braking capacity 120 T

Aft Towing Winch (with spooling device):
 Plimsoll electro hydraulic driven
 Braking capacity 120 T

Navigational & Communication Equipment Echo Sounder, EPIRB, Marine Radar, SART, GMDSS VHF Radio, GPS Navigator, WASS / GPS Plotter, Magnetic Compass, AIS System, Satellite Compass / Auto Pilot, Navtex Receiver, SSB, VHF Radio.

Fire Fighting System

Engine driven Nijhuis model HGT1-250.500 pump
 Capacity 1,400 m³/h
 Gearbox with clutch Kumera : 2FGEC-2340
 2 x SKUM fire monitor (600 m³/h each)
 Throw Length: 100m
 Throw Height: 45m
 One Set Foam Mixing fitting
 Self drenching system: Main Deck
 Deck House
 Wheel House

Others

Oil Pollution Fighting system

Accommodation

10 persons

Builder

Keppel Singmarine Pte. Ltd.

Owner

KSP Towage Sdn Bhd

This vessel specification is given in good faith and assumed to be correct on 01 July 2012



KEPPEL SMIT TOWAGE PTE LTD

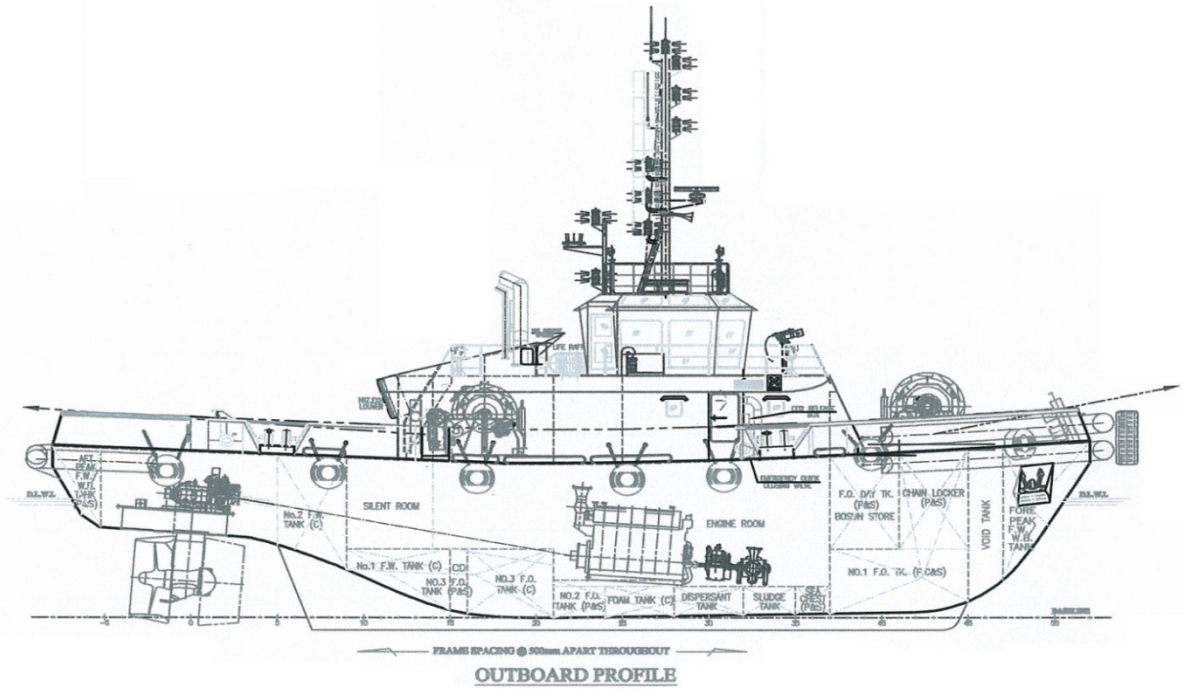


23 Gul Road, Singapore 629356 Telephone: +65 666 84 222 Fax: +65 666 84 333
 Email: kst@keppelsmit.com.sg Website: www.keppelsmit.com.sg

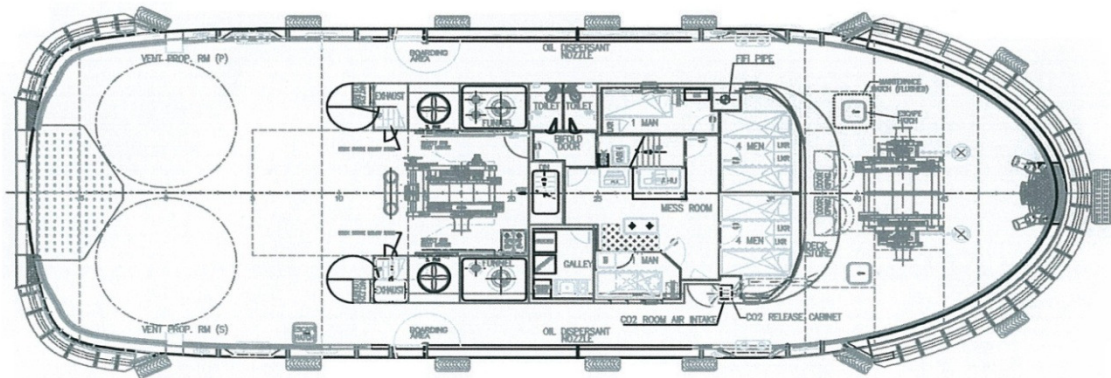


GENERAL ARRANGEMENT

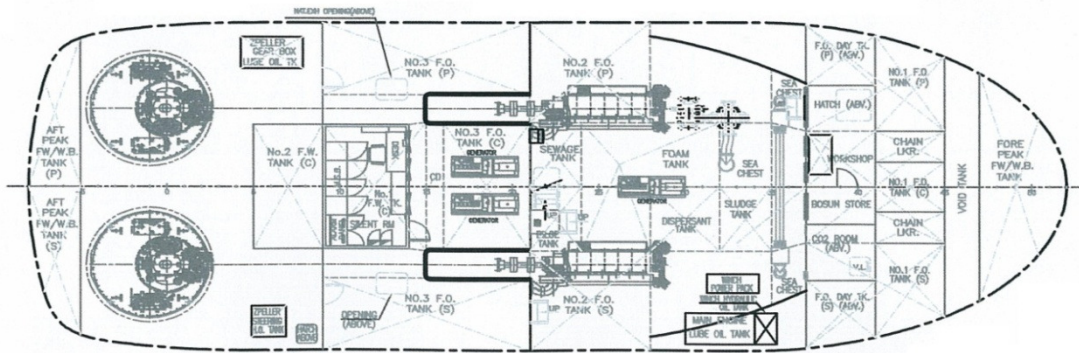
TUG NAME: KSP LIBRA



OUTBOARD PROFILE



MAIN DECK



BELOW MAIN DECK