



Type : Z-TECH HARBOUR TUG

Year Built : 2010

Port of Registry : Port Kelang, Malaysia

Class : American Bureau of Shipping
A1, AMS

Dimensions

Length Overall : 27.40m
 Breadth Moulded : 11.50m
 Draft Design : Not more than 5.20m
 Depth Moulded : 5.00m

Tonnage

Net tonnage : 98 T
 Gross tonnage : 327 T

Speed : 12 knots

Bollard pull : 65 tonnes

Capacity

Fuel : 96.0 m³
 Fresh water : 20.7 m³
 Foam : 3.0 m³
 Dispersant : 3.0 m³

Main engine

Catepillar 3516B
 - 2 X 2500 bhp at 1600 rpm

Propulsion

2 X Schottel SRP 1215
 - Fixed 4 bladed propeller with twin azimuth thrusters

Generator

Perkins 1006TWGM
 - 2 X 112KW, 3 phase, 4 wire, 415 volt, 50Hz, AC
 -Diesel driven

Deck Machinery

Anchor Winch
 - MacGreggor Plimsoll
 - Electro hydraulic

 Towing Winch
 - MacGreggor Plimsoll
 - Single split drum
 - Brake holding capacity 150 tonnes
 - Electro hydraulic

 Deck Crane
 - Palfinger PK1000M
 - 1.6 tonne at 6 m reach

Navigational & Communication Equipment

SSB Radio, Radar, Satellite Compass, Auto Pilot, Echo Sounder, VHF, GPS, Magnetic Compass, Draft Design, Navtex receiver, AIS,GMDSS(area A3), SSAS, Inmarsat mini-m, SART & EPIRB, Weather Fax

Fire Fighting System (half FiFi)

- Catepillar C18 Independent driven self priming centrifugal pump capacity 1,400 m³/hr at 12.5 bar
 - 2 x FFS fire monitor (600 m³/hr each)
 Throw Length: 100 meter
 Throw Height: 45 meter

- One set foam proportional system fitted
 - Self drenching system: Main deck
 Deck house
 Wheel house

Carbon-dioxide flooding system for engine room

Oil dispersant system 100 lpm by 2 boomless nozzles 5m spray (P+S)

Accommodation

10 persons

Builder

Cheoy Lee Shipyards Ltd.

Owner

KSP Towage Sdn Bhd

This vessel specification is given in good faith and assumed to be correct as at 03 July 2019

KSP TOWAGE SDN BHD (680765-U)

No. 129-01 & 129-02, Jalan Mutiara Emas 2A, Taman Mount Austin, 81100 Johor Bahru, Johor, Malaysia.

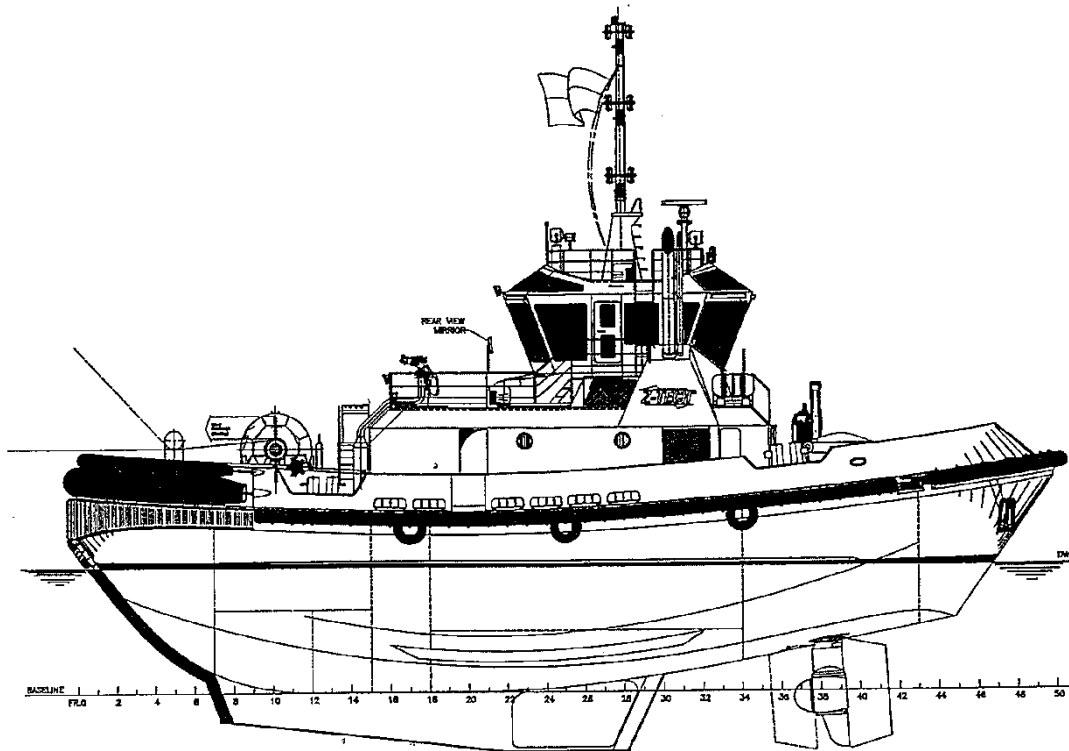
Telephone: +607 364 9070

Fax: +607 364 9362

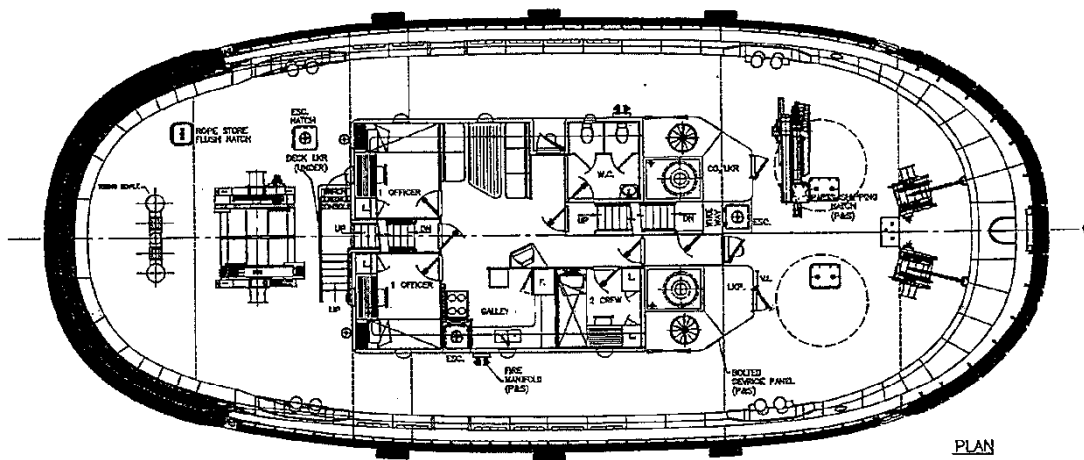
Email: general@kspkejora.com

GENERAL ARRANGEMENT

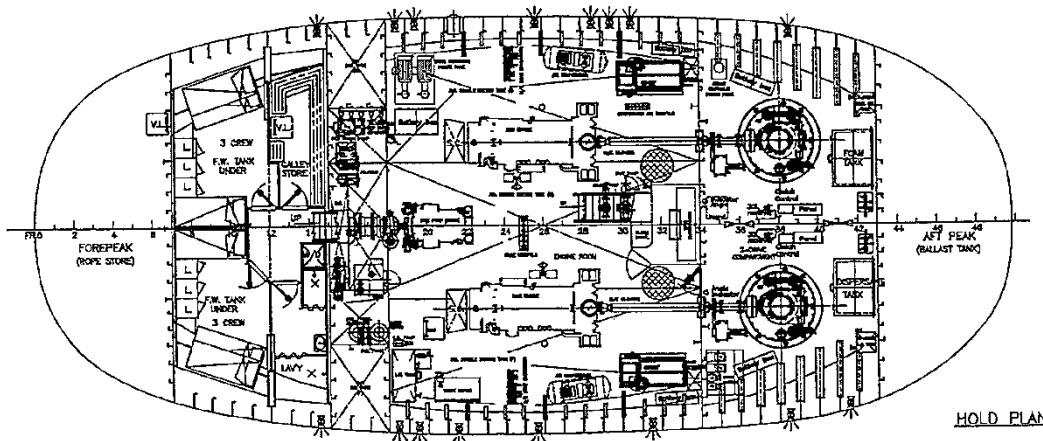
TUG NAME: KSP ZENITH



OUTBOARD PROFILE



PLAN



HOLD PLAN